

THE ORKNEY ISLANDS COUNCIL (40 MPH SPEED LIMIT) (VARIOUS ROADS IN
ORKNEY) ORDER 2012

The Orkney Islands Council in exercise of its powers under Section 84 of the Road Traffic Regulation Act 1984 ("the Act"), and of all other enabling powers, and after consultation with the chief officer of police in accordance with Part III of Schedule 9 to the Act, hereby makes the following Order:-

- First This Order may be cited as The Orkney Islands Council (40 mph Speed Limit) (Various Roads in Orkney) Order 2012 and shall come into operation on the First day of August Two Thousand and Twelve.
- Second The Interpretation Act 1978 shall apply for the interpretation of this Order as it applies for the interpretation of an Act of Parliament.
- Third No person shall drive or cause or permit to be driven any motor vehicle at a speed exceeding forty miles per hour in any of the lengths of road specified in Schedule 1 to this Order.
- Fourth This Order, where its provisions conflict, revokes the Orders specified in Schedule 2 to this Order.

Given under the seal of Orkney Islands Council on the Eleventh day of July Two Thousand and Twelve



A handwritten signature in black ink, appearing to be 'A. Blair'.

Chief Executive

SCHEDULE 1

- (1) (a) That part of the public road A986, Harray, from a point Fifty Two metres or thereby northwest of the access to the property known as Overhouse, Harray, to a point Forty Five metres or thereby northwest of the junction with the public road C5 Lyde Road, Harray, a total distance of One Thousand One Hundred and Thirty metres or thereby;
- (b) That part of the public road C12 Netherbrough Road, Harray, from its junction with the public road A986, Harray, for a distance of Two Hundred and Fifty metres or thereby to a point Twenty Six metres or thereby southwest of the access to the property known as Cott of Harra, Harray, a total distance of Two Hundred and Fifty metres or thereby;
- (c) That part of the public road C5 Lyde Road, Harray from its junction with the public road A986, Harray for a distance of Eighteen metres or thereby to a point Fifty Nine metres or thereby west of the boundary of the property known as Ailsacraig, Harray, a total distance of Eighteen metres or thereby and
- (d) That part of the unclassified Church Road, Harray, from its junction with the public road A986, Harray, for a distance of Eighteen metres or thereby to a point Eight metres or thereby northwest of the easternmost boundary of the property known as Sunniva, Harray, a total distance of Eighteen metres or thereby,

All as shown in red on Plan 1 annexed and executed as relative to this Order.

- (2) (a) That part of the public road A965, Stenness, from a point Nineteen metres or thereby southwest of the southwestmost parapet of the bridge spanning the Housequoy Burn to the southwestmost boundary point of the property known as The Standing Stones Hotel, a total distance of Six Hundred and Two metres or thereby and
- (b) That part of the public road C33 Ireland Road, Stenness, from its junction with the public road A965, Stenness, in a southeasterly direction for a distance of Twenty Five metres or thereby, a total distance of Twenty Five metres or thereby,

All as shown in red on Plan 2 annexed and executed as relative to this Order.

- (3) (a) That part of the public road A967, Birsay, from a point Ninety Five metres or thereby northwest of its junction with the public road A986, Birsay, to a point One Hundred and Fifty Four metres or thereby south of the access to the property known as Queena Fjold, Birsay, a total distance of Six Hundred and Fifty metres or thereby and

- (b) That part of the public road C9 Loons Road, Birsay, from its junction with the public road A967, Birsay, for a distance of Twenty metres or thereby to a point Fifteen metres or thereby east of the westernmost boundary of Twatt Church, Birsay, a total distance of Twenty metres or thereby,

All as shown in red on Plan 3 annexed and executed as relative to this Order.

- (4)
 - (a) That part of the public road B9050, Deerness from a point Forty Three metres or thereby northeast of the junction with the unclassified Quoybelloch Road, Deerness, to a point One Hundred and Thirty Five metres or thereby northeast of the junction with the unclassified Newark Road, Deerness, a total distance of Six Hundred metres or thereby;
 - (b) That part of the unclassified Denwick Road, Deerness, from its junction with the public road B9050, Deerness, for a distance of One Hundred and Five metres or thereby to a point in line with the northwesternmost boundary of the property known as Glenavon, Deerness, a total distance of One Hundred and Five metres or thereby;
 - (c) That part of the unclassified Newark Road, Deerness from its junction with the public road B9050, Deerness and continuing in a southeasterly direction for a distance of Twenty metres or thereby, a total distance of Twenty metres or thereby and
 - (d) The unclassified Sands Park, Deerness, from its junction with the public road B9050, Deerness, a total distance of One Hundred and Sixty Nine metres or thereby,

All as shown in red on Plan 4 annexed and executed as relative to this Order.

- (5)
 - (a) That part of the public road C3 Tankerness Hall Road, Tankerness, from a point One Hundred and Seven metres or thereby southeast of the access to Bossack Landfill and Civic Amenity Site to a point One Hundred and Forty metres or thereby west of the junction with the public road C3 Shore Road, Tankerness, a total distance of Seven Hundred and Ten metres or thereby and
 - (b) The unclassified Whitecrest Park, Tankerness, from its junction with the public road C3 Tankerness Hall Road, Tankerness, a total distance of Forty metres or thereby,

All as shown in red on Plan 5 annexed and executed as relative to this Order.

- (6) (a) That part of the public road C17 Moss Road, Holm, from a point Forty Two metres or thereby northwest of the westernmost boundary of the property known as Daisybank, Holm, to a point Twenty metres or thereby southeast of the access to the property known as Mooness, Holm, a total distance of Nine Hundred and Forty metres or thereby;
- (b) That part of the unclassified Stratheast Road, Holm, from its junction with the public road C17 Moss Road, Holm, for a distance of Fifty Seven metres or thereby to a point Eight metres or thereby northeast of the access to the property known as North Dawn, Holm, a total distance of Fifty Seven metres or thereby and
- (c) That part of the unclassified Graemeshall Road, Holm, from its junction with the public road C17 Moss Road, Holm, leading in a southwesterly direction for a distance of Twenty Four metres or thereby, a total distance of Twenty Four metres or thereby,

All as shown in red on Plan 6 annexed and executed as relative to this Order.

- (7) That part of the public road A964, St Ola, from a point Twenty five metres or thereby eastnortheast of the access road to the property known as Blinkbonny, St Ola, to a point One Hundred and Two metres or thereby southwest of the access to the property known as Easter Greenigoe, Orphir, a total distance of One Thousand Two Hundred and Fifty Seven metres or thereby,

All as shown in red on Plan 7 annexed and executed as relative to this Order.

- (8) (a) That part of the public road C1 Glaitness Road, Kirkwall, from the termination of the existing 30 mph limit at a point Fifty metres or thereby west of the property known as Stromberry, Kirkwall, to its junction with the public road C1 Old Finstown Road, St Ola, at Little Corse Cottage, St Ola, a total distance of One Hundred and Sixty metres or thereby and
- (b) That part of the public road C1 Old Finstown Road, St Ola, from its junction with the public road C1 Glaitness Road, Kirkwall at Little Corse Cottage, St Ola, to a point Twenty One metres or thereby west of the boundary of the property known as St Clair, St Ola, a total distance of Two Hundred metres or thereby,

All as shown in red on Plan 8 annexed and executed as relative to this Order.

- (9) (a) That part of the public road B9053, St Ola, also known as Scapa Bay Road, St Ola from a point Twenty metres or thereby southeast of its junction with the public road A964 to its junction with the public road B9148, also known as New Scapa Road, St Ola, a total distance of One Thousand and Ninety Five metres or thereby and
- (b) That part of the public road B9148, St Ola, also known as New Scapa Road, St Ola, from its termination near Scapa Pier, St Ola, to a point Thirty metres or thereby northnortheast of the southernmost access to Crantit Trail, St Ola, a total distance of Eight Hundred and Fifty metres or thereby.

All as shown in red on Plan 9 annexed and executed as relative to this Order.



Chief Executive

SCHEDULE 2

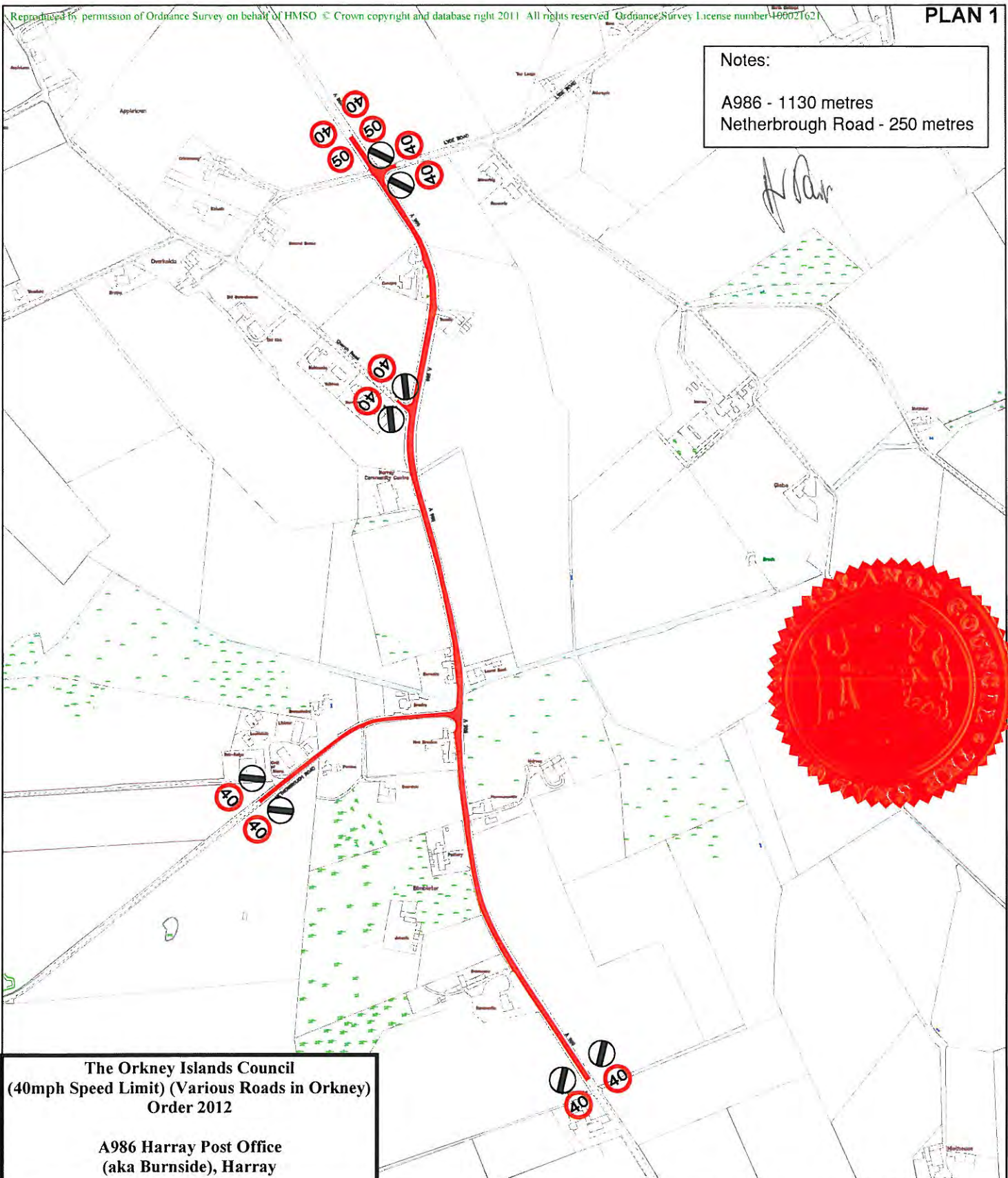
1. The Orkney Islands Council (40 mph Speed Limit) (Stenness) Order 1996, which came into operation on the First day of March Nineteen Hundred and Ninety Six.
2. The Orkney Islands Council (40 mph Speed Limit) (A964 at Former Scapa School) Order 2000 which came into operation on the First day of February Two Thousand and One.



Chief Executive

Notes:

A986 - 1130 metres
Netherbrough Road - 250 metres



The Orkney Islands Council
(40mph Speed Limit) (Various Roads in Orkney)
Order 2012

A986 Harray Post Office
(aka Burnside), Harray

File Ref. R3.46.04 . 0209	Drg. No. SLR-2.2
Revision	
Date 5 August 2011	Drawn <i>LM Birss</i>
Scale Not to Scale	Checked <i>K D Roy</i>

ROADS SERVICES

DEVELOPMENT AND INFRASTRUCTURE

Council Offices, Kirkwall
Orkney, KW15 1NY
tel (01856) 873535
fax (01856) 876094

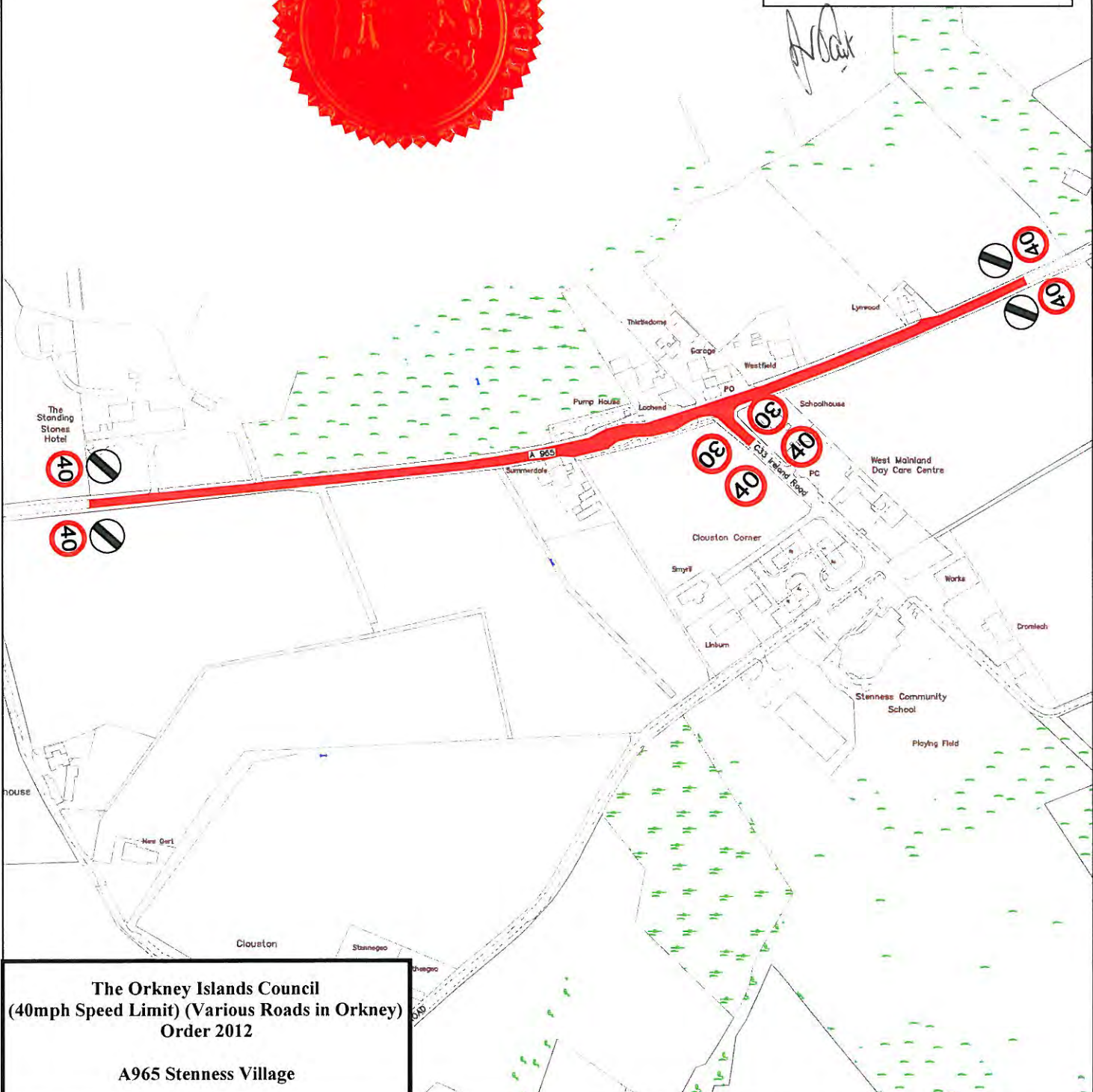
Executive Director :-
Gavin Barr
BSc CEng MICE MIHT



Notes:

A965 - 602 metres

C33 Ireland Road - 25 metres



The Orkney Islands Council
 (40mph Speed Limit) (Various Roads in Orkney)
 Order 2012

A965 Stenness Village

File Ref. R3.46.04 . 0209	Drg. No. SLR-2.3
Revision	
Date 5 August 2011	Drawn LM Birss
Scale Not to Scale	Checked KD Roy

ROADS SERVICES

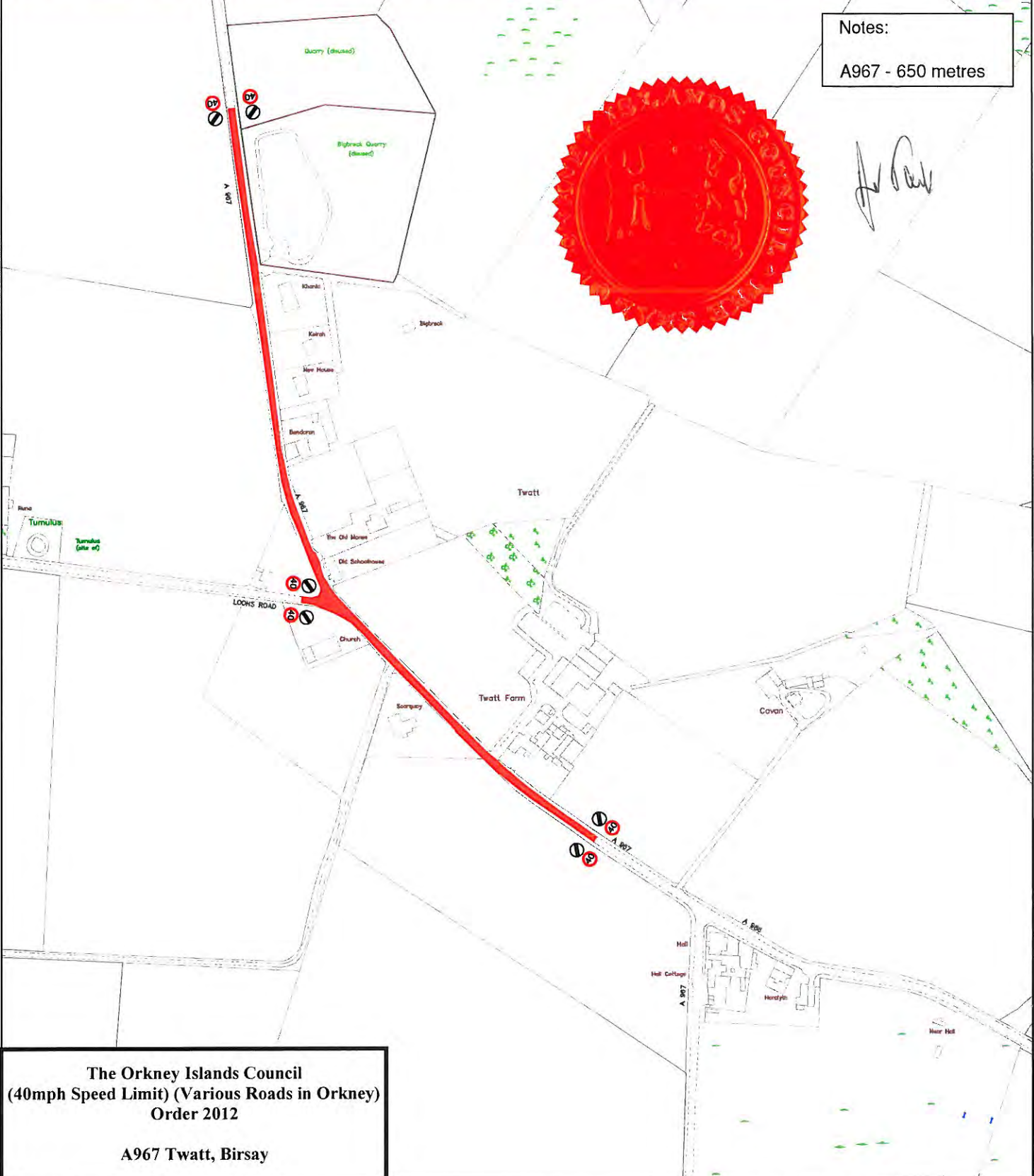
DEVELOPMENT AND INFRASTRUCTURE

Council Offices, Kirkwall
 Orkney, KW15 1NY
 tel (01856) 873535
 fax (01856) 876094

Executive Director :-
 Gavin Barr
 BSc Hons MSc URP MRTPI

ORKNEY
 ISLANDS COUNCIL

Notes:
A967 - 650 metres



The Orkney Islands Council
(40mph Speed Limit) (Various Roads in Orkney)
Order 2012

A967 Twatt, Birsay

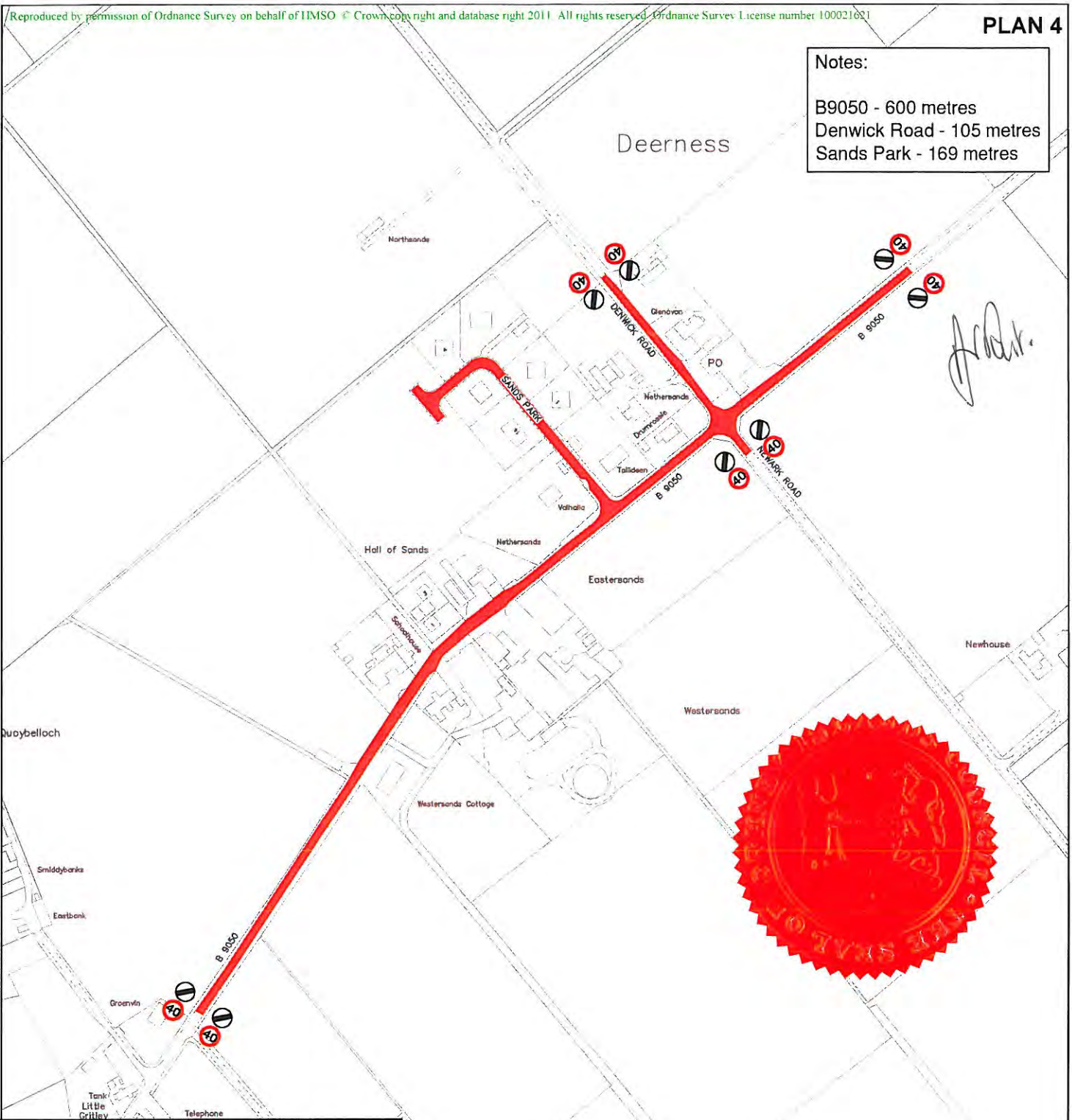
File Ref. R3.46.04 . 0209	Drg. No. SLR-2.4
Revision	
Date 5 August 2011	Drawn LM Birss
Scale Not to Scale	Checked K D Roy

ROADS SERVICES

DEVELOPMENT AND INFRASTRUCTURE
Council Offices, Kirkwall
Orkney, KW15 1NY
tel (01856) 873535
fax (01856) 876094
Executive Director :-
Gavin Barr
BSc Hons MSc URP MRTPI



Notes:
 B9050 - 600 metres
 Denwick Road - 105 metres
 Sands Park - 169 metres



The Orkney Islands Council
 (40mph Speed Limit) (Various Roads in Orkney)
 Order 2012

B9050 Hillhead area, Deerness

File Ref. R3.46.04 . 0209	Drg. No. SLR-2.5
Revision	
Date 5 August 2011	Drawn LM Birss
Scale Not to Scale	Checked KD Roy

ROADS SERVICES

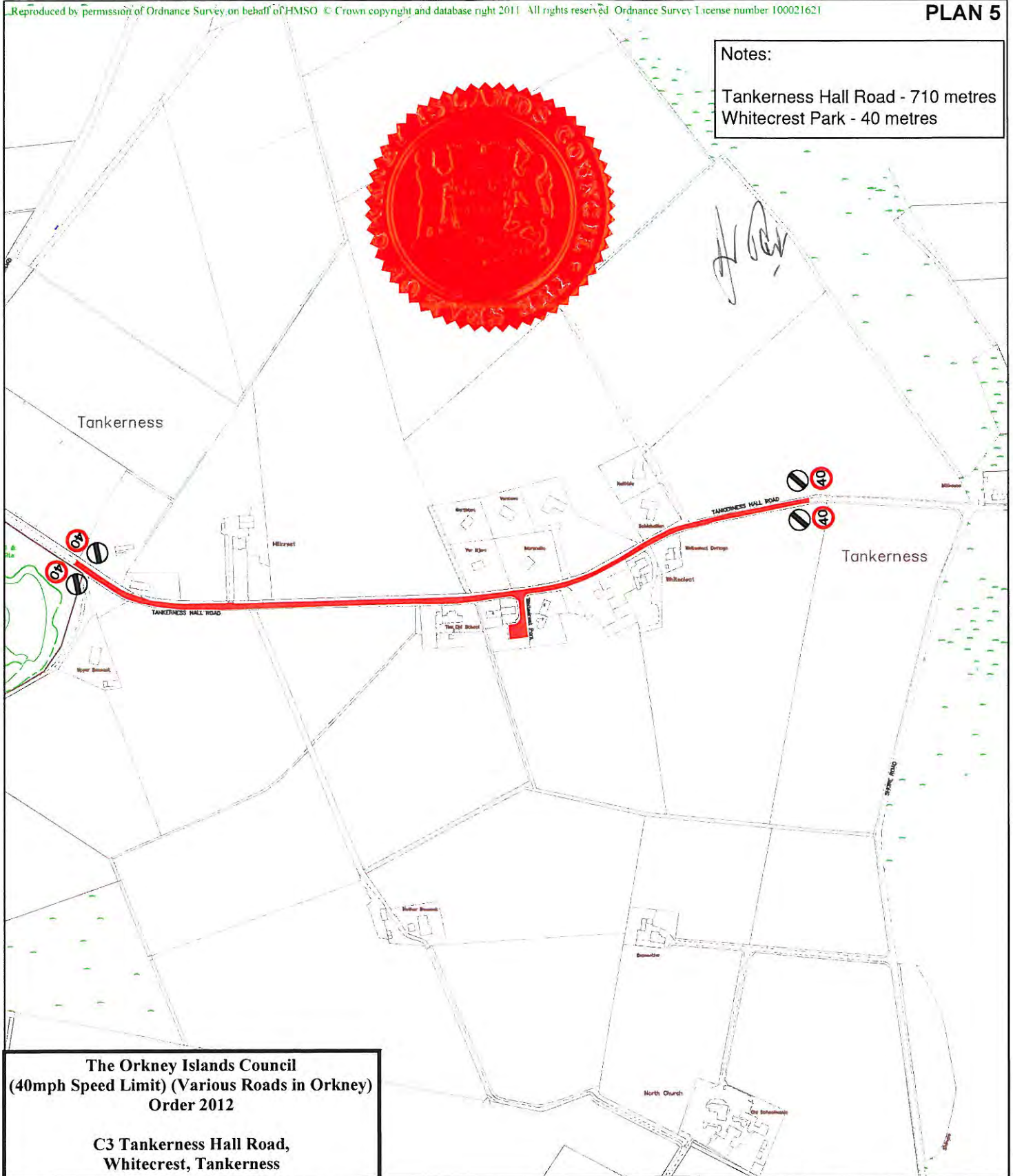
DEVELOPMENT AND INFRASTRUCTURE

Council Offices, Kirkwall
 Orkney, KW15 1NY
 tel (01856) 873535
 fax (01856) 876094

Executive Director :-
 Gavin Barr
 BSc Hons MSc URP MRTPI



Notes:
 Tankerness Hall Road - 710 metres
 Whitecrest Park - 40 metres



**The Orkney Islands Council
 (40mph Speed Limit) (Various Roads in Orkney)
 Order 2012**

**C3 Tankerness Hall Road,
 Whitecrest, Tankerness**

File Ref. R3.46.04 . 0209	Drg. No. SLR-2.6
Revision	
Date 5 August 2011	Drawn <i>LM Birss</i>
Scale Not to Scale	Checked <i>K D Roy</i>

**ROADS
 SERVICES**

DEVELOPMENT AND INFRASTRUCTURE

Council Offices, Kirkwall
 Orkney, KW15 1NY
 tel (01856) 873535
 fax (01856) 876094

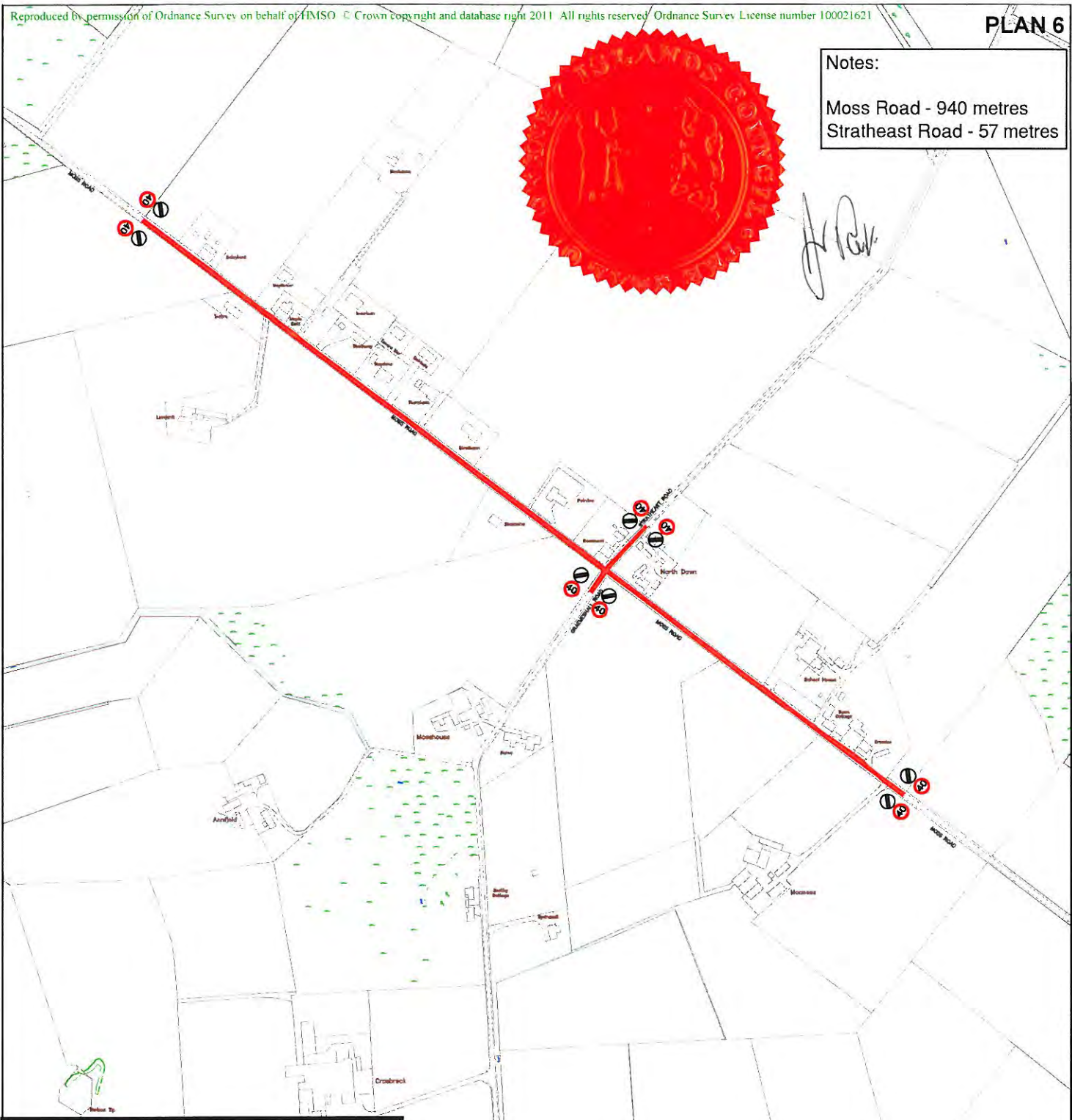
Executive Director :-
 Gavin Barr
 BSc Hons MSc URP MRTPI



Notes:
 Moss Road - 940 metres
 Stratheast Road - 57 metres



Handwritten signature or initials.



The Orkney Islands Council
 (40mph Speed Limit) (Various Roads in Orkney)
 Order 2012

C17 Moss Road, Holm

File Ref. R3.46.04 . 0209	Drg. No. SLR-2.7
Revision	Drawn <i>LM Birss</i>
Date 5 August 2011	Checked <i>K D Roy</i>
Scale Not to Scale	

ROADS SERVICES

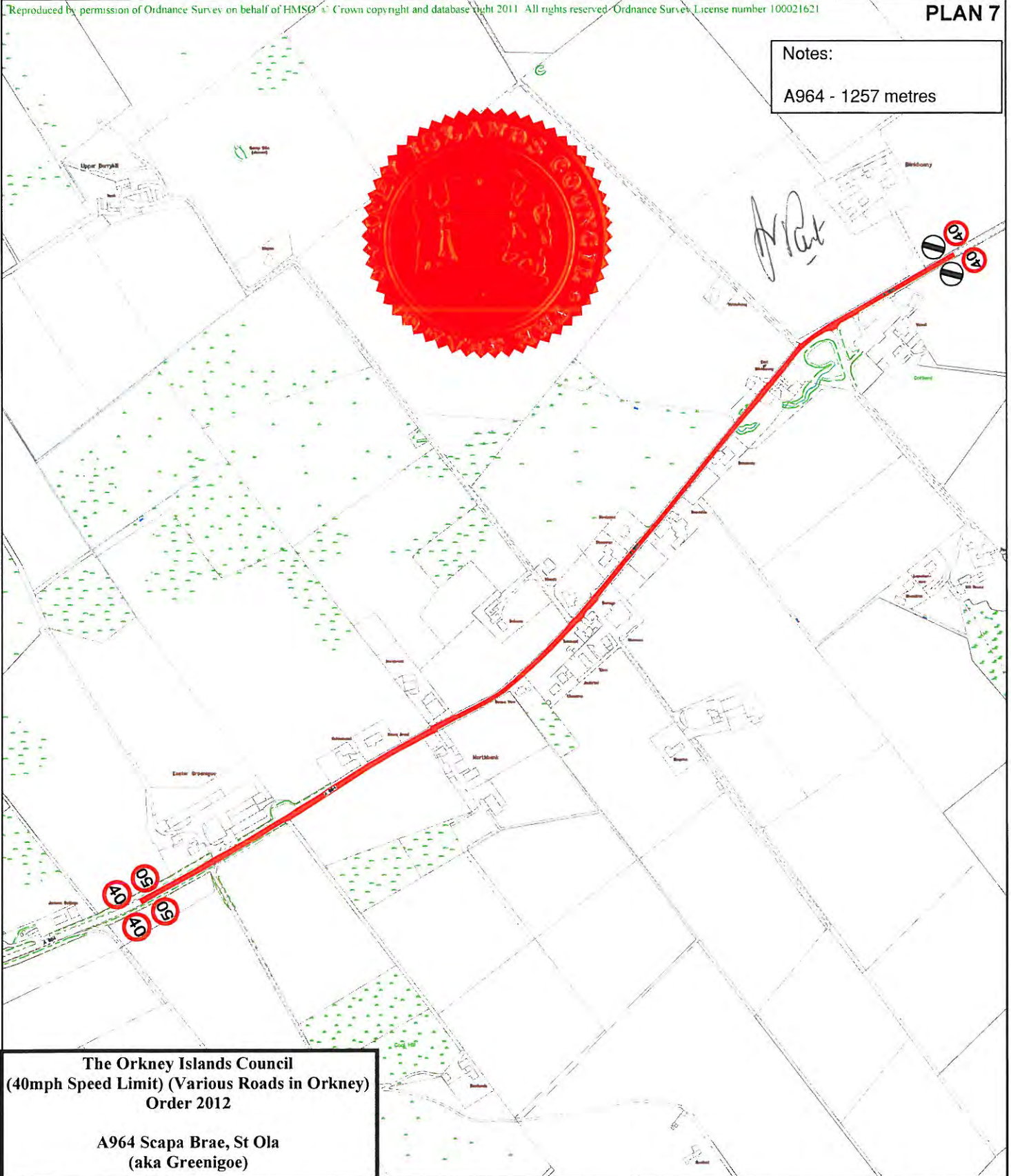
DEVELOPMENT AND INFRASTRUCTURE

Council Offices, Kirkwall
 Orkney, KW15 1NY
 tel (01856) 873535
 fax (01856) 876094

Executive Director :-
 Gavin Barr
 BSc Hons MSc URP MRTPI



Notes:
A964 - 1257 metres



The Orkney Islands Council
(40mph Speed Limit) (Various Roads in Orkney)
Order 2012

A964 Scapa Brae, St Ola
(aka Greenigoe)

File Ref. R3.46.04 . 0209		Drg. No. SLR-2.9	
Revision	A		
Date 26 October 2011		Drawn LM Birss	
Scale Not to Scale		Checked K D Roy	

ROADS SERVICES

DEVELOPMENT AND INFRASTRUCTURE

Council Offices, Kirkwall
Orkney, KW15 1NY
tel (01856) 873535
fax (01856) 876094

Executive Director :-
Gavin Barr
BSc Hons MSc URP MRTPI

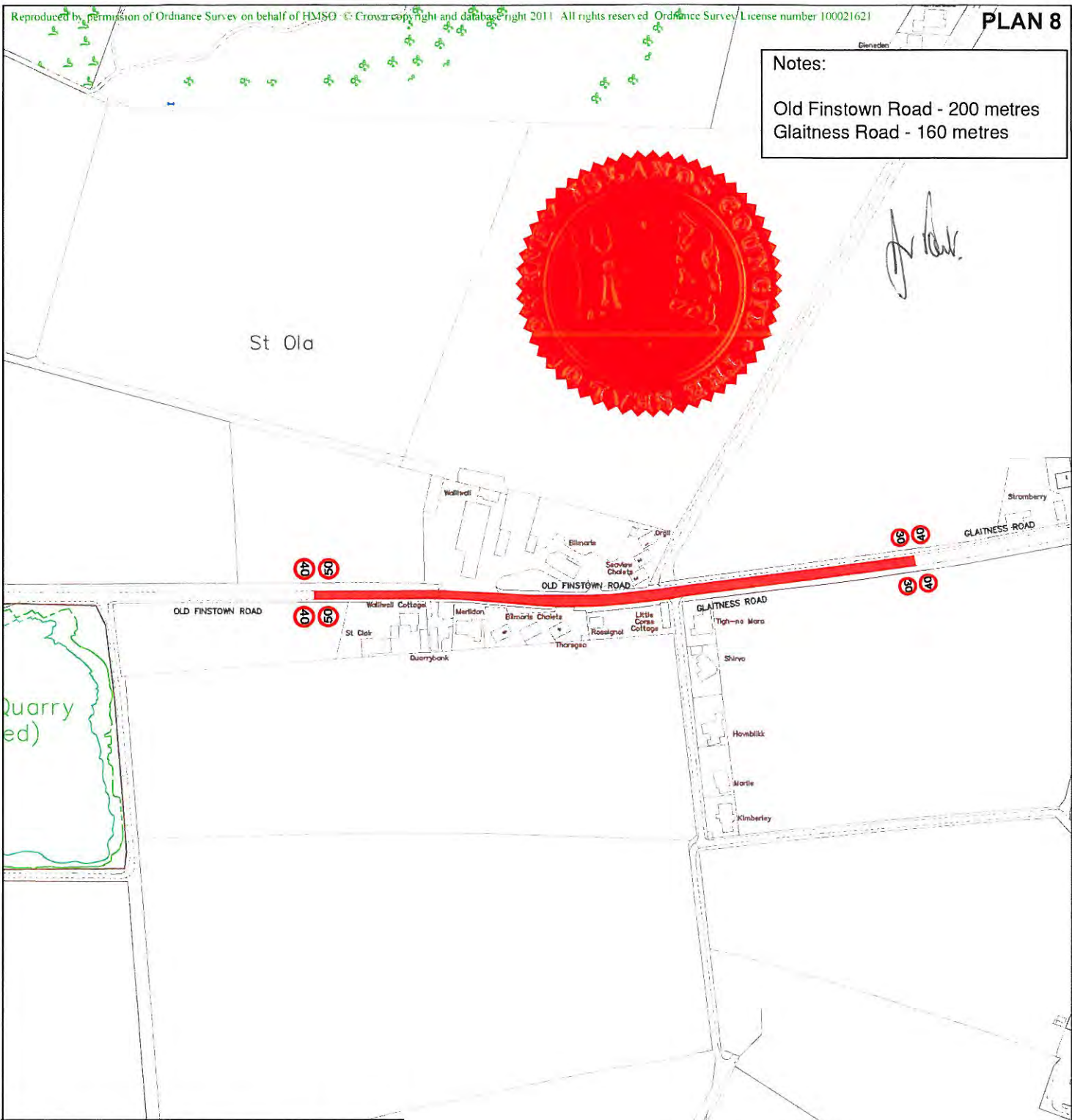


ORKNEY
1st AND 2nd COUNCIL

Notes:
 Old Finstown Road - 200 metres
 Glaitness Road - 160 metres



J. Roy



The Orkney Islands Council
 (40mph Speed Limit) (Various Roads in Orkney)
 Order 2012

C1 Old Finstown Rd / Glaitness Rd

File Ref. R3.46.04 . 0209	Drg. No. SLR-2.10
Revision	
Date 8 August 2011	Drawn <i>LM Birss</i>
Scale Not to Scale	Checked <i>K D Roy</i>

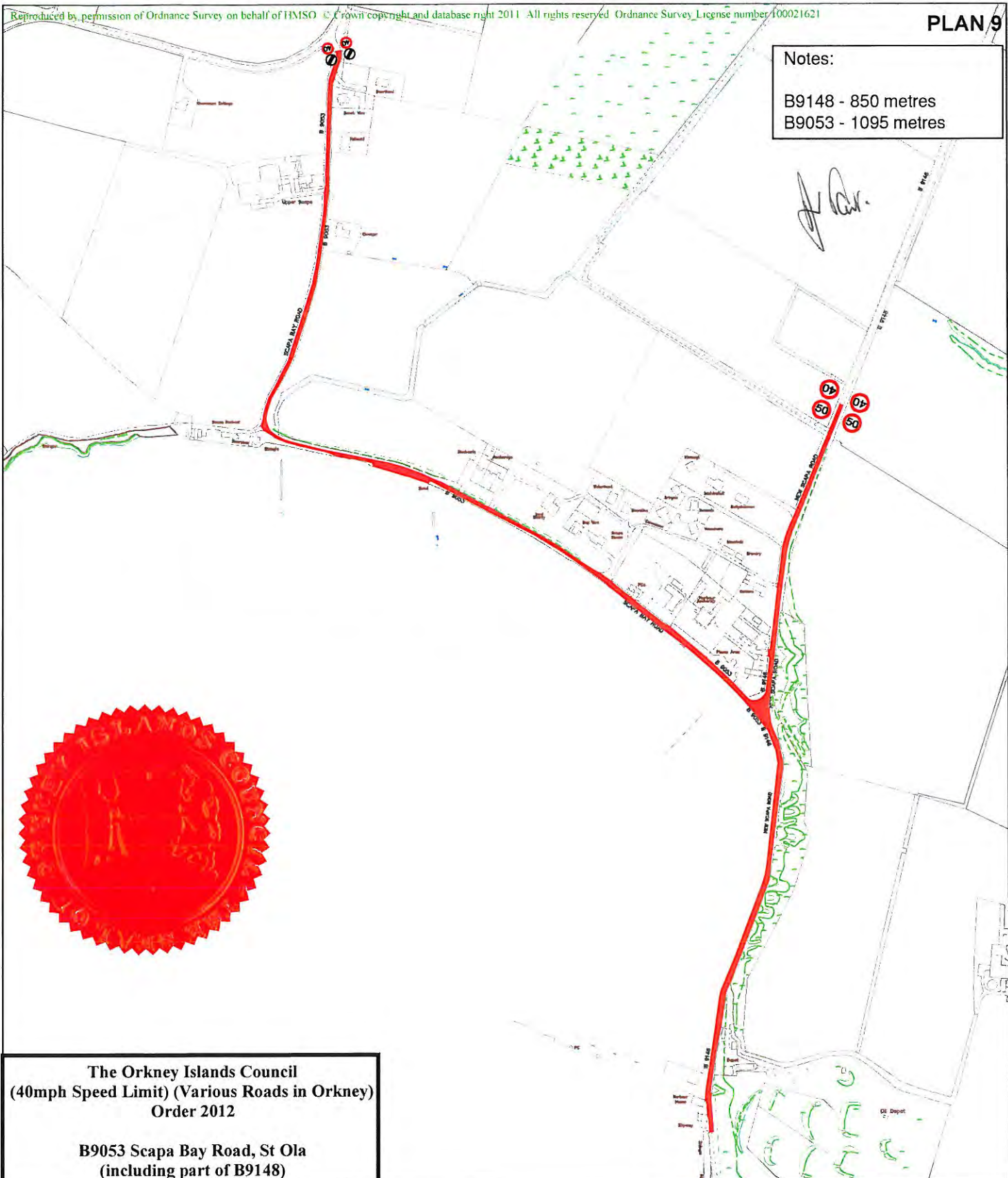
ROADS SERVICES

DEVELOPMENT AND INFRASTRUCTURE

Council Offices, Kirkwall
 Orkney, KW15 1NY
 tel (01856) 873535
 fax (01856) 876094

Executive Director :-
 Gavin Barr
 BSc Hons MSc URP MRTPI

Notes:
 B9148 - 850 metres
 B9053 - 1095 metres



The Orkney Islands Council
 (40mph Speed Limit) (Various Roads in Orkney)
 Order 2012

B9053 Scapa Bay Road, St Ola
 (including part of B9148)

File Ref. R3.46.04 . 0209		Drg. No. SLR-2.11	
Revision	A		
Date	11 October 2011	Drawn	<i>L M Birss</i>
Scale	Not to Scale	Checked	<i>K D Roy</i>

ROADS SERVICES

DEVELOPMENT AND INFRASTRUCTURE

Council Offices, Kirkwall
 Orkney, KW15 1NY
 tel (01856) 873535
 fax (01856) 876094

Executive Director :-
 Gavin Barr
 BSc Hons MSc URP MRTPI

