

Item: 5

Community Development Fund Sub-committee: 22 February 2022.

Application Number 0/5/8/74.

Eday Heritage Centre Association SCIO.

Redevelopment of Eday Heritage Centre.

**Report by Corporate Director for Enterprise and Sustainable
Regeneration.**

1. Purpose of Report

To consider an application from Eday Heritage Centre Association SCIO for assistance towards redevelopment of Eday Heritage Centre.

2. Recommendations

The Sub-committee is invited to note:

2.1.

That Eday Heritage Centre Association SCIO has applied for assistance from the Community Development Fund towards redevelopment of Eday Heritage Centre, at a total estimated eligible cost of £41,118.

2.2.

That Eday Heritage Centre Association SCIO is contributing £2,643 of its own resources towards the project.

2.3.

That the North Isles Landscape Partnership Scheme has identified redevelopment of Eday Heritage Centre as a project to potentially support and has indicated a potential grant allocation of £16,916 towards of the project, subject to approval.

2.4.

That, on 26 November 2019, when considering eligibility of projects funded by the North Isles Landscape Partnership Scheme in applying for grants from the Community Development Fund, and other Council funding, the Policy and Resources Committee recommended:

- That community-led projects which had provisionally secured part-funding from the North Isles Landscape Partnership Scheme be considered eligible to seek co-

funding from other Council funding streams, including the Community Development Fund.

2.5.

That messages of support have been received from the undernoted groups:

- Eday Community Council.
- Eday Partnership.
- European Marine Energy Centre (EMEC).

It is recommended:

2.6.

That a grant amounting to 50% of total eligible costs, up to a maximum sum of £20,559, to be met from the Community Development Fund, be offered to Eday Heritage Centre Association SCIO towards redevelopment of Eday Heritage Centre.

2.7.

That powers be delegated to the Corporate Director for Enterprise and Sustainable Regeneration, to authorise advance payment of the grant, if approved, on receipt of invoices, in order to assist cash flow requirements of Eday Heritage Centre Association SCIO.

2.8.

That powers be delegated to the Corporate Director for Enterprise and Sustainable Regeneration, in consultation with the Solicitor of the Council, to conclude an Agreement, on the Council's standard terms and conditions, with Eday Heritage Centre Association SCIO in respect of the funding, detailed at paragraph 2.6 above.

3. Background

3.1.

Eday Heritage Centre Association SCIO (EHCA) is a Scottish Charitable Incorporated Organisation (number SC048870), responsible for the provision of the Eday Heritage Centre, which was opened in 2008. The Centre was created from a renovated Baptist Kirk and holds an important array of local artefacts and archive material.

3.2.

As well as being a visitor attraction, the Centre is also used as a community space for meetings, talks, classes and social events. There is a small kitchen and community space in the building. Eday Heritage Centre is run by local residents who all give their time on a voluntary basis and organise fundraising activities to sustain the Centre. There is no admission charge and the centre relies on donations.

3.3.

During the initial consultation phase of the North Isles Landscape Partnership Scheme (NILPS), the important role and value of heritage centres in the North Isles was identified and a range of projects were included for delivery in the NILPS programme to enable heritage centres to realise their potential and ambition.

3.4.

The Association were keen to seek professional advice and guidance to enable them to look at the design and layout of the building in order to explore the best ways to use the space and enhance the visitor experience. The Association also wanted help to look at the options available to them to develop and improve exhibitions and displays in the Centre to make sure artefacts and other archive material are displayed in an informative and engaging way.

3.5.

With support from NILPS, local heritage consultants were engaged to work with EHCA during 2020 and 2021 and produced an interpretation plan outlining options available to redevelop and enhance the Centre. A defined list of works has been agreed and costs fully investigated that will see the space in the Centre used to its maximum potential, ensuring that the layout works well for visitors to the centre but also still retains flexibility to offer space for community events.

4. Project Proposal

4.1.

The overall project aim is to redevelop Eday Heritage Centre, and in turn to increase the numbers of people visiting and engaging meaningfully with the facility and the island's heritage. Eday Heritage Centre is a key indoor visitor facility in Eday and, with support, this redevelopment aims to create an enhanced visitor experience. The proposed new layout, new displays and exhibitions seek to put heritage displays in context by using wall-mounted panels that will tell a complete story. The series of displays and narratives will offer the visitor a clearer journey through the centre and the heritage of Eday. A floor plan and indicative layout of the proposed development is included in Appendix 1.

4.2.

The redevelopment proposal includes the following:

- Curate displays that more closely relate to and tell the story of life in Eday, including more about Eday people and bringing more material in the archive into focus.
- Connect the displays inside the Eday Heritage Centre with information of what can be seen and done around Eday.
- Enhancements to make more interesting use of the building's attractive architectural features and improve accessibility.
- Creation and addition of wall vinyl map and welcome message.

- Addition of upright display cases.
- Creation and addition of various wall mounted display panels.
- Addition of new shelving units and leaflet racks.
- Creation and addition of marine energy and renewable display with support from EMEC.
- Addition of partition wall in mezzanine area.
- Addition of suspension system interpretation panels.

4.3.

Not only is this project about enhancing the visitor experience but it is also about encouraging more Eday residents to engage with their heritage. The future of the Centre depends not only on visitors from further afield, but also engagement with local residents. The current Association hope that this refresh to the Centre will be an opportunity to re-engage with island residents and see the Centre used by local people as well as visitors.

4.4.

The project costs and proposed funding arrangements are outlined in the table below (exclusive of VAT as Eday Heritage Centre Association are VAT registered):

Project Details.	Cost.
Redevelopment costs	£36,630.
Freight costs	£750.
Contingency	£3,738.
Total.	£41,118.
Project Financing.	Amount.
*Community Development Fund (50%).	*£20,559.
*North Isles Landscape Partnership Scheme (41.1%).	*£16,916.
*Eday Community Council (1.2%)	*£500.
*Eday Partnership (1.2%)	*£500.
Eday Heritage Centre Association (6.5%).	£2,643.
Total.	£41,118.

* To be confirmed.

4.5.

The Community Development Fund has the opportunity to help attract the maximum amount of external match funding through supporting this project. The NILPS has, through development of the Heritage Lottery Fund application and indicative costs provided by ECHA, identified a potential budget of £16,916. This budget has the potential to match fund the project and will be considered for approval under delegated powers shortly.

4.6.

With several board members and volunteers of ECHA willing and able to provide voluntary labour, the ECHA contribution to the project outlined in section 4.4. will include 114 hours of in-kind contribution at £10 per hour.

4.7.

EHCA will continue to maintain and promote the enhanced facility once the project is complete. The North Isles Landscape Partnership Scheme will also promote the project through its website and social media presence.

5. Project Appraisal

5.1.

The project will have a lasting legacy in the form of the physical displays and exhibitions curated, and the aim is to help secure the long-term sustainability of Eday Heritage Centre and its activities in the local community.

5.2.

Messages of support have been received from the undernoted groups:

- Eday Community Council.
- Eday Partnership.
- European Marine Energy Centre (EMEC).

5.3.

The Community Development Fund and its predecessor, the Community Development Fund for the New Millennium, have supported a wide range of development projects involving heritage facilities, including:

- Upgrades to Longhope Lifeboat Museum.
- Creation of a new Wyre Community and Heritage Centre.
- Upgrades to Orkney Fossil and Heritage Centre, Burray.
- Creation of Lurdy Heritage Centre, Flotta.

5.4.

With regard to EHCA's application, the following is an assessment and evaluation against each of the approved assessment and evaluation criteria:

5.4.1. Evidence of need

- EHCA has liaised with the North Isles Landscape Partnership Scheme since the initial community consultations, which provided evidence of local community support and buy-in for the project. Also, one of the main objectives of the Landscape Partnership Scheme programme nationally is the development and

retention of traditional skills between generations. This project will help achieve this within the local community of Eday.

- The proposed project has received letters of support from various local groups and a research centre.

5.4.2. Achievability

- EHCA is run by a committee of four people, who, despite being a small number, represent a wide demographic within the island population and possess a wide range of skills and experience to carry through the project. ECHA also has 10 regular volunteers within the island. As such, there are a wide range of skills and experience among the EHCA membership and the wider volunteers along with enthusiasm and support from the local community.

5.4.3. Sustainability

- This project will help support the long-term sustainability of the Eday Heritage Centre. By redeveloping and improving the displays and exhibitions while at the same time ensuring that the space in the building is maximised and used to its full potential then the Centre will remain an engaging and attractive visitor facility for years to come.

5.4.4. Serving the local public and having lasting benefits

- The project will benefit the Eday community, improving the accessibility of the island's heritage and promoting Eday's rich heritage to the wider public. It will also offer an enhanced facility that includes flexible community space that can be used by the wider community for years to come.

5.4.5. Opportunities provided or upgraded

- The Eday Heritage Centre is the key indoor visitor attraction in Eday so it is a valuable asset to the island. It has operated successfully for a number of years now and this project will ensure that it is upgraded and able to continue to be the visitor experience that people expect to find for years to come.

5.4.6. Enriching quality of life

- Understanding, valuing and sharing heritage can bring people together, inspire pride in communities and boost investment in local economies. It is hoped that this redevelopment will result in these positive impacts. The Centre will be a flexible space that will enable people to learn and research more about Eday's heritage but it is also a community space where people can come together for talks, presentation, social events, meetings etc.

5.4.7. Value for money

- Project costs have been carefully considered based on a detailed specification of EHCA'S requirements as part of redevelopment plans for the heritage centre. Best

value has been sought through obtaining quotes from various suppliers and contractors, where possible from the island.

5.4.8. Partnership funding

- There is the potential of securing funding amounting to £16,916 from the North Isles Landscape Partnership Scheme, as well as small contributions from the Eday Community Council and Eday Partnership.
- Volunteer time from members of ECHA has also been identified as part of their contribution to the project. This demonstrates strong potential support for the project from national funding programmes and support from the local community, prior to approaching the Community Development Fund.

6. Links to Council Plan

6.1.

The proposals in this report support and contribute to improved outcomes for communities as outlined in the Council Plan strategic priority themes of Thriving Communities.

6.2.

The proposals in this report relate directly to Priority 3.11 – We will review and develop the Empowering Communities Project to create a sustainable model which will enable and empower communities in the delivery of services and projects in their community, of the Council Delivery Plan.

7. Links to Local Outcomes Improvement Plan

The proposals in this report support and contribute to improved outcomes for communities as outlined in the Local Outcomes Improvement Plan priority of Community Wellbeing.

8. Financial Implications

8.1.

In July 2016, a further £1,000,000 was allocated to the Community Development Fund, with £100,000 ring-fenced for Community Councils.

8.2.

At present there is sufficient budget within the 2016 Community Development Fund tranche to consider this project.

8.3.

The option of accessing Community Development Fund grant as an advance payment, in order to assist cash flow, may also be required to ensure the project reaches a satisfactory conclusion. It is therefore recommended that powers be delegated to the Corporate Director for Enterprise and Sustainable Regeneration, in

consultation with the Head of Finance, to authorise advance payment of the grant, if approved, on receipt of invoices if required in order to assist EHCA with its cash flow requirements.

8.4.

The North Isles Landscape Partnership Scheme is a £4,500,000, 5-year programme with various funders making up the funding for its delivery. This includes a financial contribution of up to £282,260 towards the delivery phase costs of the North Isles Landscape Partnership Scheme from the Council's Strategic Reserve Fund as approved in September 2017. In effect, the Council has restricted its financial contribution to the Scheme by establishing a financial ceiling.

8.5.

When approved by the Heritage Lottery Fund in March 2018, the North Isles Landscape Partnership Scheme, which this project sits within, acknowledged that if an identified funding gap of £480,423 could not be bridged that the programme of works may need to be curtailed. Limited success in applying for additional funding has reduced this funding gap and the community groups co-ordinating projects are actively encouraged to source additional match funding wherever possible. Although the Scheme did refer to a number of possible grant funders, it is notable that this list did not refer to any other potential sources of Council funding. It is, however, accepted that this list was indicative rather than exhaustive.

8.6.

On 26 November 2019, when considering eligibility of projects funded by the North Isles Landscape Partnership Scheme in applying for grants from the Community Development Fund, and other Council funding, the Policy and Resources Committee recommended:

- That community-led projects which had provisionally secured part-funding from the North Isles Landscape Partnership Scheme be considered eligible to seek co-funding from other Council funding streams, including the Community Development Fund.

9. Legal Aspects

9.1.

There are no legal constraints to the recommendations in this report being implemented and the relevant powers are contained in section 20 of the Local Government in Scotland Act 2003.

9.2.

If grant assistance is to be provided by the Council, a legally-binding agreement will require to be entered into between the Council and the recipient setting out the terms on which the funding is being provided.

10. Contact Officers

Gareth Waterson, Corporate Director for Enterprise and Sustainable Regeneration, extension 2521, Email gareth.waterson@orkney.gov.uk.

Roddy Mackay, Head of Planning, Development and Regulatory Services, extension 2530, Email roddy.mackay@orkney.gov.uk.

Jackie Thomson, Development and Regeneration Manager, extension 2507, Email jackie.thomson@orkney.gov.uk.

Stuart Allison, Economic Development Manager, extension 2514, Email stuart.allison@orkney.gov.uk.

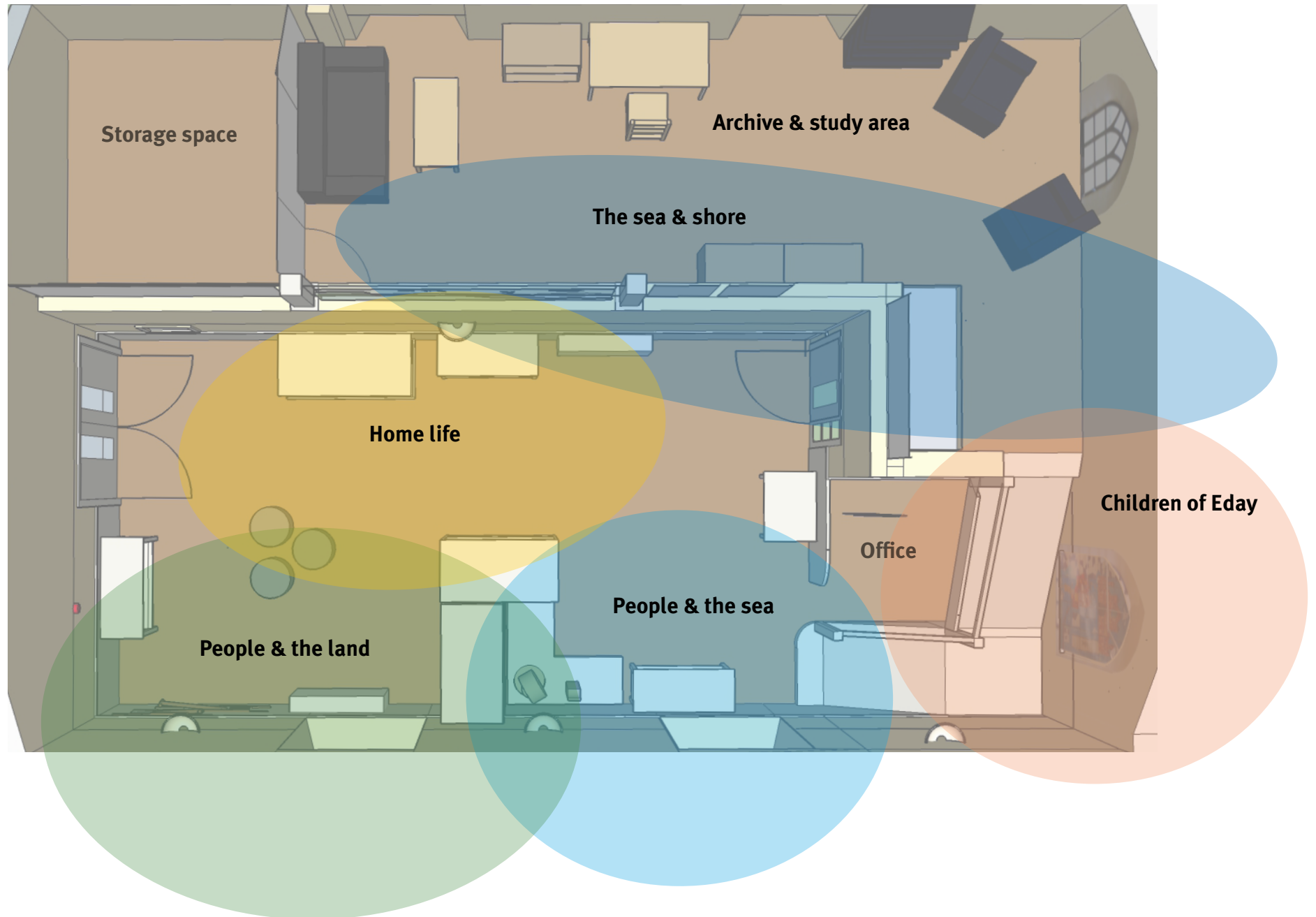
Alister Brown, Economic Development Officer, extension 2512, Email alister.brown@orkney.gov.uk.

11. Appendix

Appendix 1 – Floor Plan and Indicative Layout, Eday Heritage Centre.

Appendix 1 Indicative layout

Zones

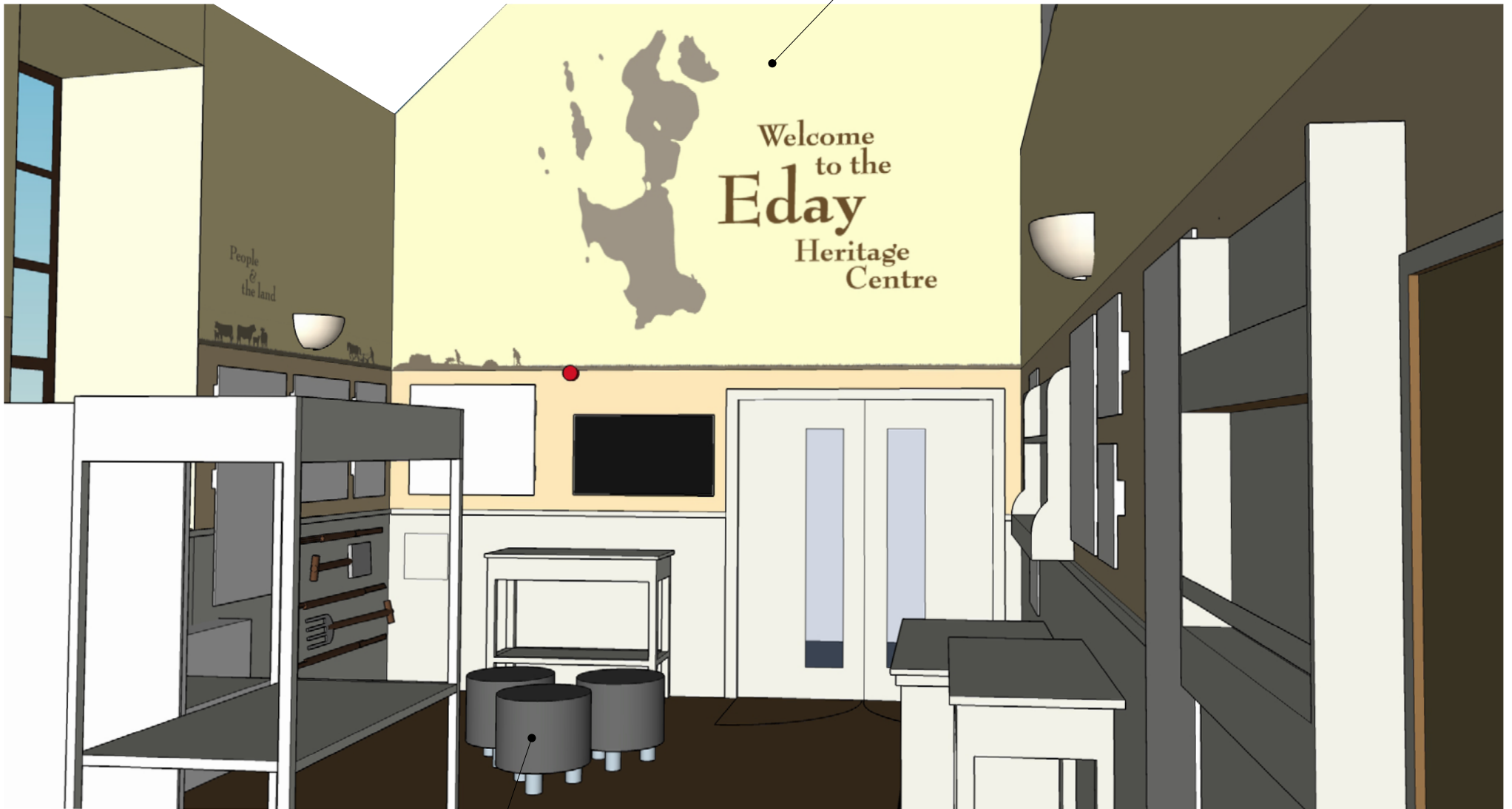


Overhead view



View on entering Heritage Centre

Wall vinyl with map and welcome message or other text relating to Eday



Small stools, easy to remove for events

View from cafe end of gallery

School children's stained glass displayed over arched window

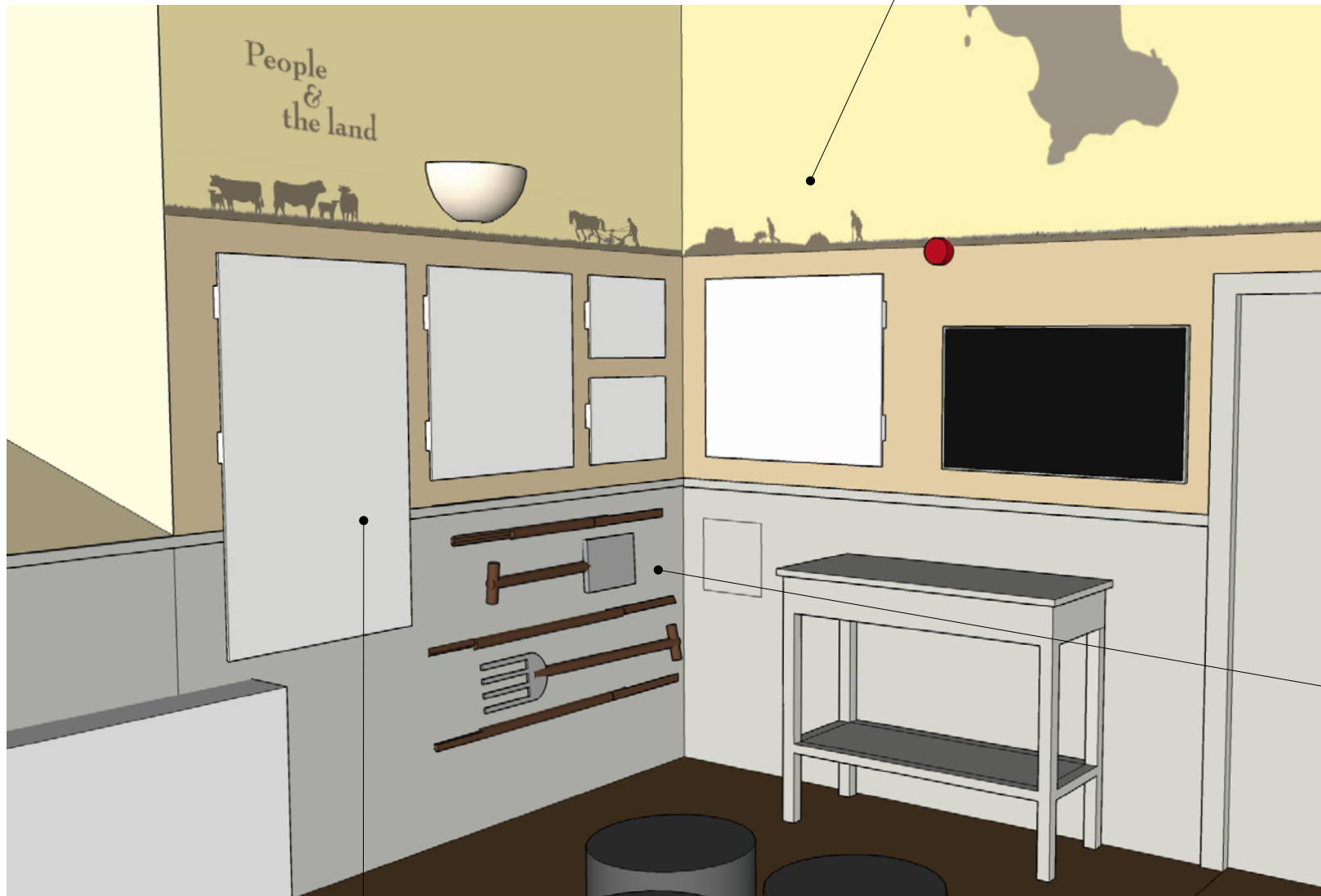


low partition wall separating office area also acts as display space for temporary information

Upright cases placed together to create central display area

People and the land display area

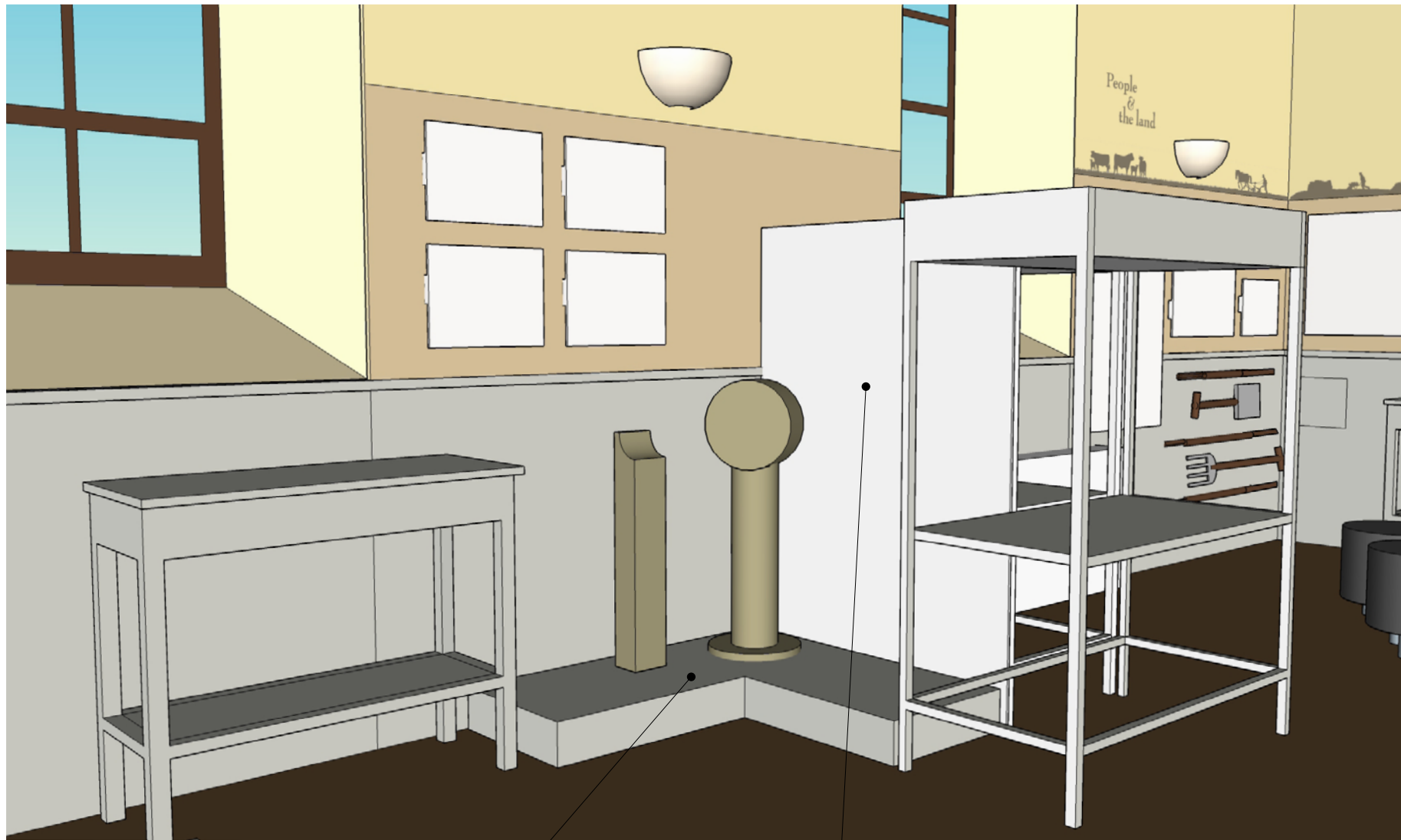
Wall frieze created by combination of painted area and vinyl images



Peat cutting tools mounted on bead board

Panels of varying size and shape make flexible display space. Batten fixings raise panels off wall slightly to enable longer panels to drop down over bead board

People and the Sea display area

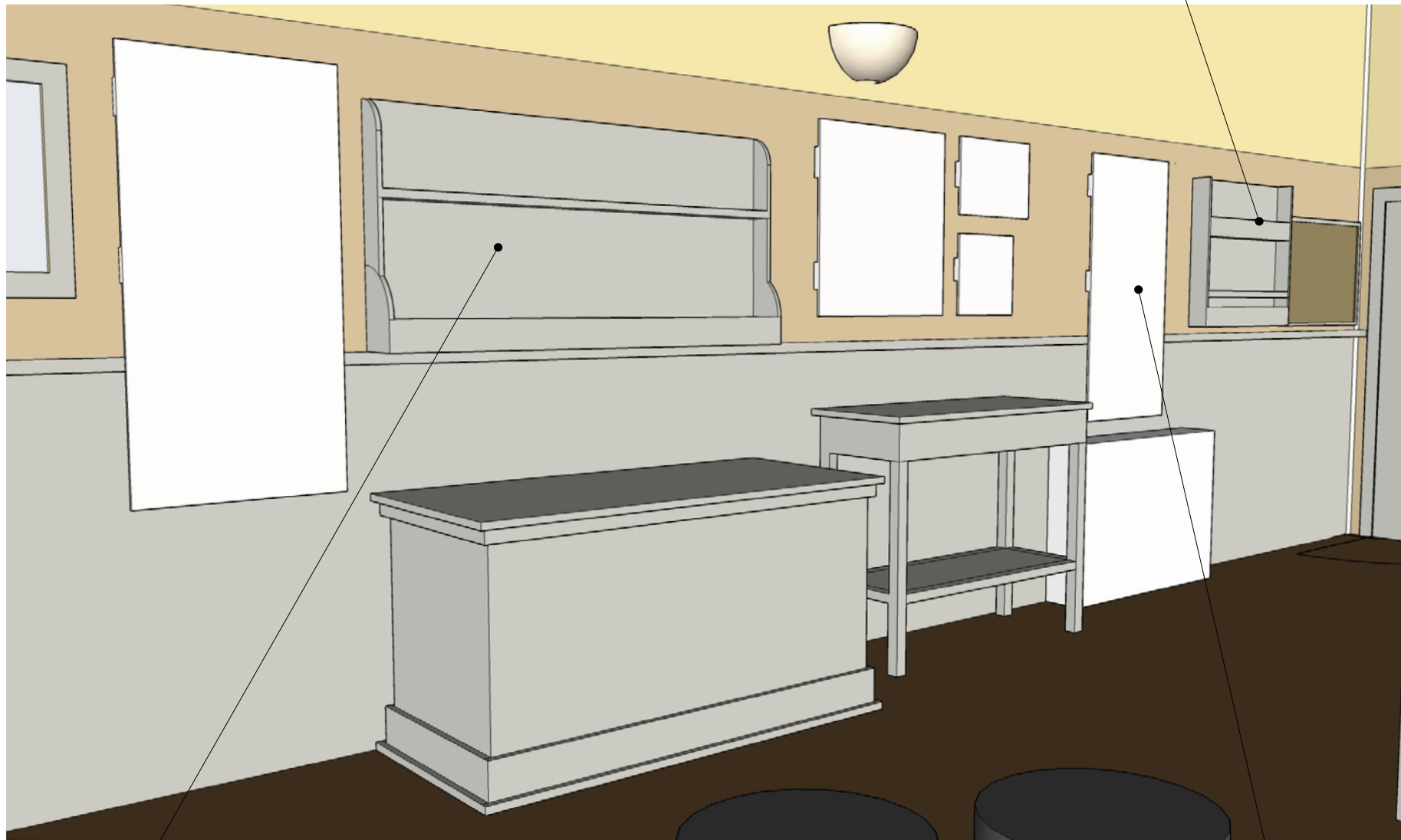


Raised plinth creates display space for larger objects

Large display panel fixed to reverse of upright case for e.g. wrecks map

Home life display area

Leaflet rack and notice board painted to match colour of other units

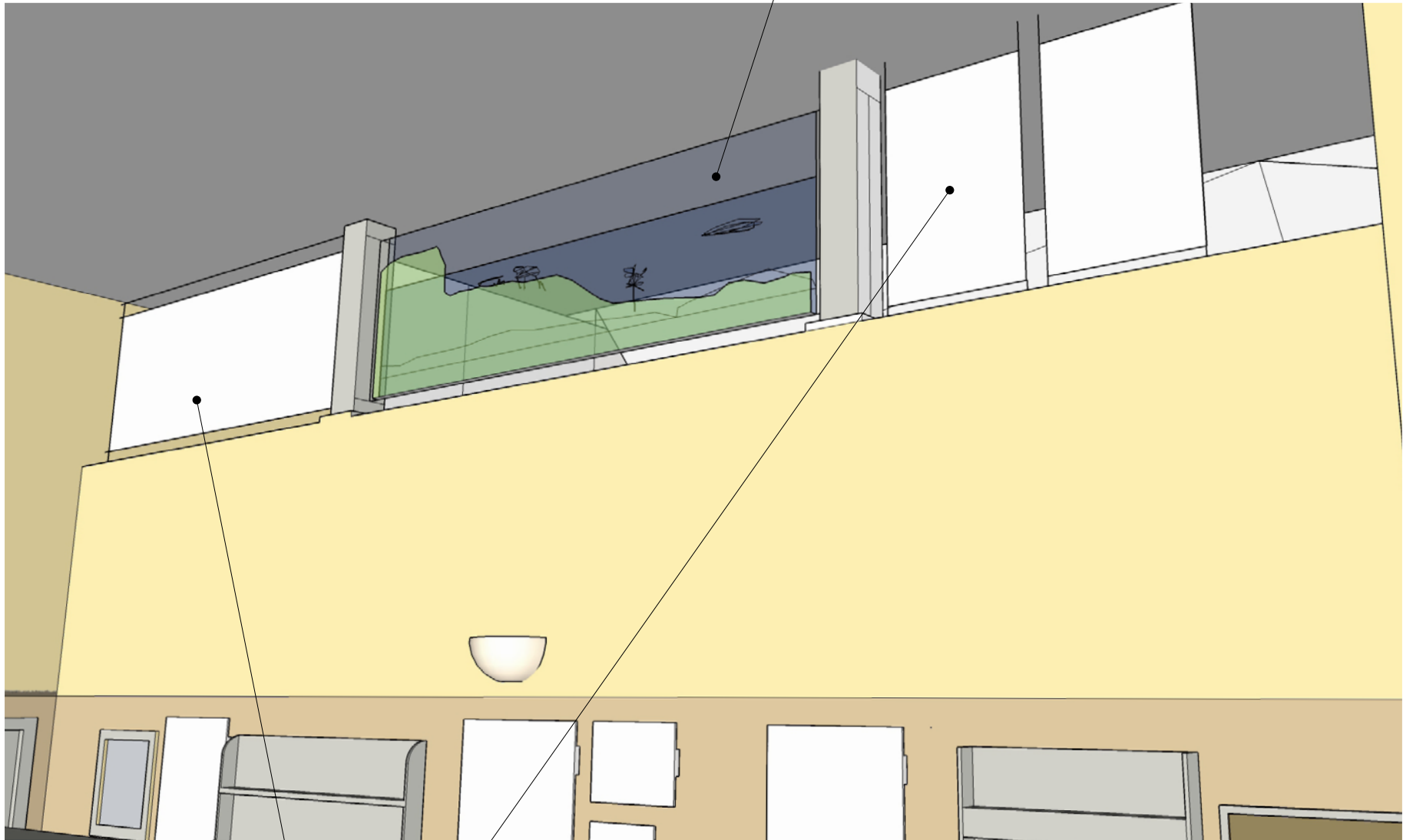


New shelf unit fixed to wall for displaying small objects e.g. glass bottles

Intro panel

View of mezzanine area from downstairs

Marine energy display can be seen from downstairs



Back of interpretation panels can have large images for viewing from downstairs

Mezzanine area

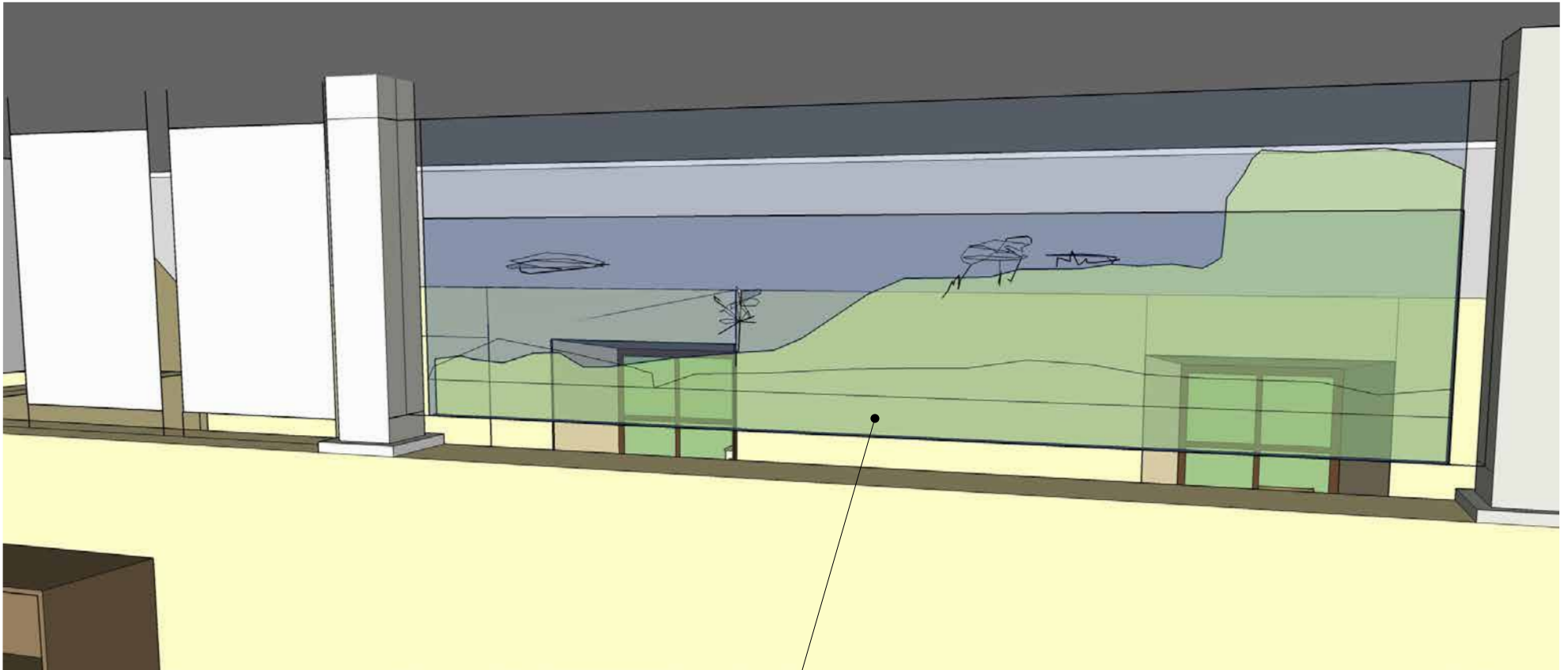
Display space created by using cable system to suspend interpretation panels

Partition wall with large image to screen storage area



Rearrange existing furniture to maximise space and create display and study areas

Mezzanine area - Display area



Marine energy display - multi layered sheets of acrylic printed to show marine devices