

Corporate Directors and Remits



Head of Paid Service

Corporate Directors

Remits

Oliver Reid
Chief Executive

Stephen Brown
Chief Officer
Integration Joint Board / Orkney HSCP (NHSO/OIC)

James Wylie
Corporate Director
Education, Leisure & Housing

Hayley Green
Corporate Director
Neighbourhood Services & Infrastructure

Gareth Waterson
Corporate Director
Enterprise & Sustainable Regeneration

Karen Greaves
Corporate Director
Strategy, Performance & Business Solutions

Overall Responsibility for services delegated by the NHS and Orkney Islands Council to Integration Joint Board (IJB). Including:

- Children and Families
- Residential Childcare
- Criminal Justice
- Health and Community Care Services
- Adult and Learning Disability Social Work
- Mental Health Services
- All Age Learning Disability Services
- Allied Health Professionals (Adults and Children)
- Public Protection (including Alcohol and Drugs Partnership and Community Justice)
- Psychology Services
- Primary Care including Dental Services

A full list of delegated services can be found in Annex 1 and 2 within the Orkney Integration Scheme.

- Early Learning & Childcare
- Primary Education
- Secondary Education
- Further Education
- Support for Learning & Inclusion
- Community Learning & Development
- Employability
- Sport & Leisure
- Libraries
- Museums
- Housing
- Homelessness
- Strategic Housing Investment Plan
- Schoolcare Accommodation
- Employability
- Schools & Café Catering

- Roads & Waste Operations and Management
- Fleet
- Quarry
- Capital Programme
- Engineering
- Architects
- Surveyors
- Grounds Maintenance
- Burial Grounds
- Estates
- Safety & Resilience
- Building Cleaning
- ICT
- Development Management
- Development & Marine Planning
- Building Standards
- Environmental Health
- Trading Standards
- Climate Change

- Corporate Finance
- Strategic Finance
- Payroll & Pensions
- Revenues & Benefits
- Payments
- Budgets & Monitoring
- Marine Services
- Harbours
- Orkney Ferries
- Transportation
- Airfields
- Economic Development
- Regeneration
- Islands Deal
- Strategic Projects

- Corporate Improvement & Performance
- Digital Strategy & Systems Development
- Corporate Strategy & Community Planning
- Community Consultation & Engagement
- Customer Services
- Corporate Administration
- Elections
- Democratic Services & Community Councils
- Communications
- Orkney & Shetland Valuation Joint Board
- Legal Services, Licensing & Information Governance
- Committee Services
- Internal Audit
- Procurement
- Registrar Services
- Human Resources
- Organisational Development

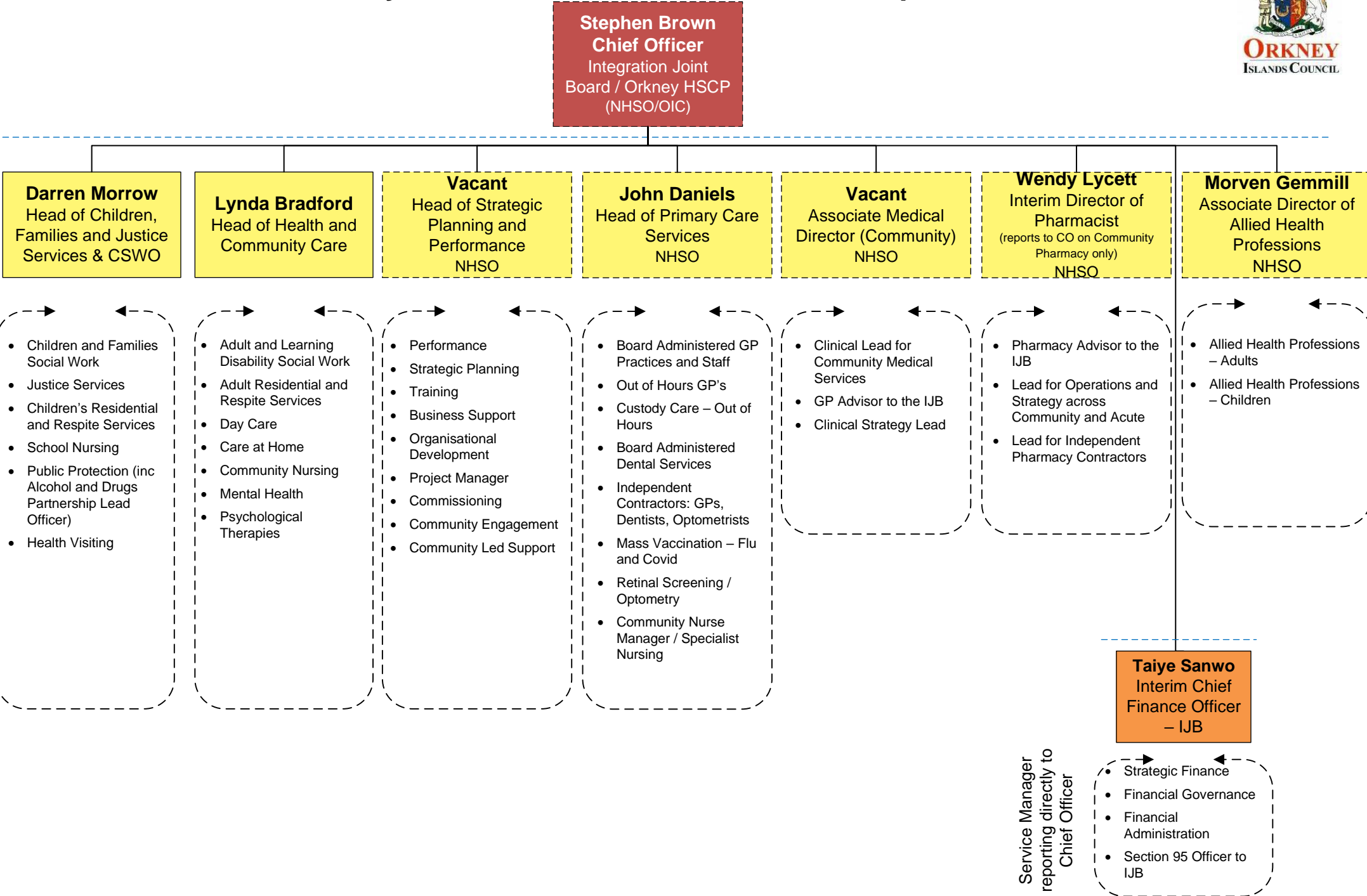
Orkney Health and Social Care Partnership Remits



Corporate Director

Heads of Service

Remits



Structure with remits and names of postholders

Orkney Health and Social Care Partnership – Children, Families and Justice Services Remits



Heads of Service

Service Managers

Remits

Darren Morrow
Head of Children,
Families and Justice
Services & CSWO

Alanna Burns
Interim Service
Manager
(Children and
Families Field Work)

- Children and Families Social Work
- Family Support Team

Gemma Williams
Interim Service
Manager
(Children and Families
Authority Wide Service)

- Children's Residential and Respite Services
- Fostering, Adoption and Kinship Social Work
- Independent Reviewing Officer

Sharon-Ann Paget
Service Manager
(Criminal Justice /
Public Protection)

- Criminal Justice
- Lead Officer Public Protection Committee
- Lead Officer Alcohol and Drugs
- Lead Officer Community Justice

Louise Willis
Service Manager
(Children's Health
Services)
NHSO

- School Nursing
- Health Visiting

Orkney Health and Social Care Partnership – Health and Community Care Remits

Heads of Service

Service Managers

Remits

Lynda Bradford
Head of Health and
Community Care

Cathy Martin
Service Manager
(Adult and Learning
Disability Social
Work) / MHO

- Adult and Learning Disability Social Work
- Social Work Out of Hours Service

Yvonne McPhee
Interim Service
Manager
(Social Care)

- Adult Residential and Respite Services
- Day Care

Helen Sievwright
Service Manager
(Community Care)

- Care at Home
- Community Mobile Responders Service
- Telecare
- Frozen Meals
- Telecare Development Officer

Suzanne Roos
Consultant
Psychologist
NHSO

- Psychology services

Chetana Patil
Clinical Director - Child
and Adolescent Mental
Health Services
NHSO

- Quality and Assurance

Louise Byrne
Clinical Nurse Manager
(Community) (only for
Mainland aspect)
NHSO

- Community Nursing – East
- Community Nursing – West

Diane Young
Service Manager
– Mental Health
NHSO

- Adult Mental Health Services
- Substance Misuse Services
- Child and Adolescent Mental Health Services
- Older Peoples Team

Various
Medical Psychiatric
Posts
NHSO

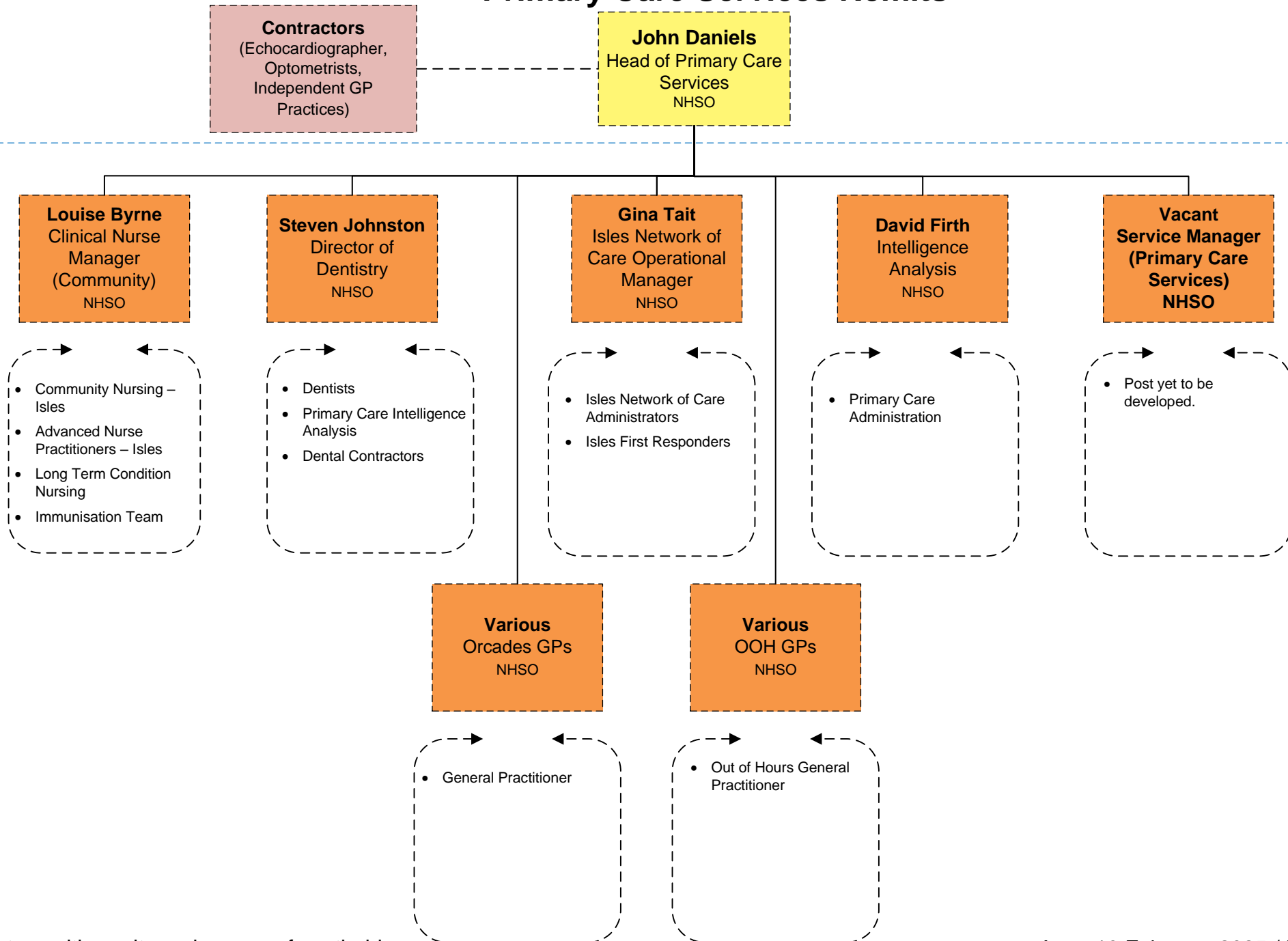
- Consultant Psychiatrist – Adults
- Consultant Psychiatrist – Child and Adolescent Mental Health Service
- GP with Special Interest (Substance Misuse)
- GP with Special Interest (Dementia)

Orkney Health and Social Care Partnership – Primary Care Services Remits

Heads of Service

Service Managers

Remits



Orkney Health and Social Care Partnership – Children, Families and Justice Services Remits

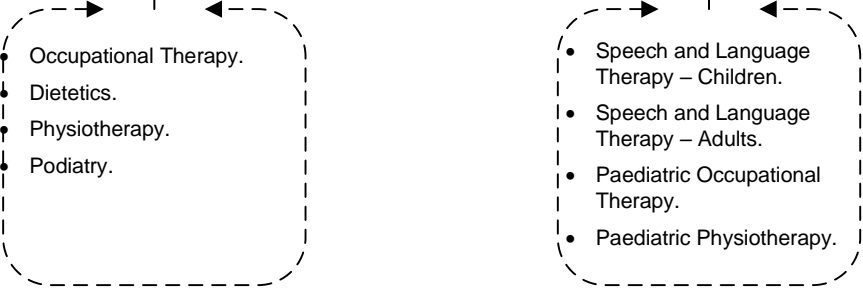


Heads of Service

Service Managers

Remits

Morven Gemmill
Associate Director of
Allied Health
Professions
(NHSO)



Education, Leisure & Housing Remits



Corporate Director

Heads of Service

Remits

James Wylie
Corporate Director
Education, Leisure & Housing

Peter Diamond
Head of Education

Frances Troup
Head of Community
Learning, Leisure &
Housing

- Early Learning & Childcare
- Primary Education
- Secondary Education
- Further & Higher Education (Orkney College UHI)
- Support for Learning & Inclusion Services
- Education Quality Improvement & Development
- GIRFEC Strategic Implementation
- Attainment Improvement
- Curriculum Development
- Teaching Staff CPD
- Supported Study
- Pupil, Parent & Schools Support
- Technicians Service
- Pupil Health & Wellbeing
- Educational Psychology Service / ASN

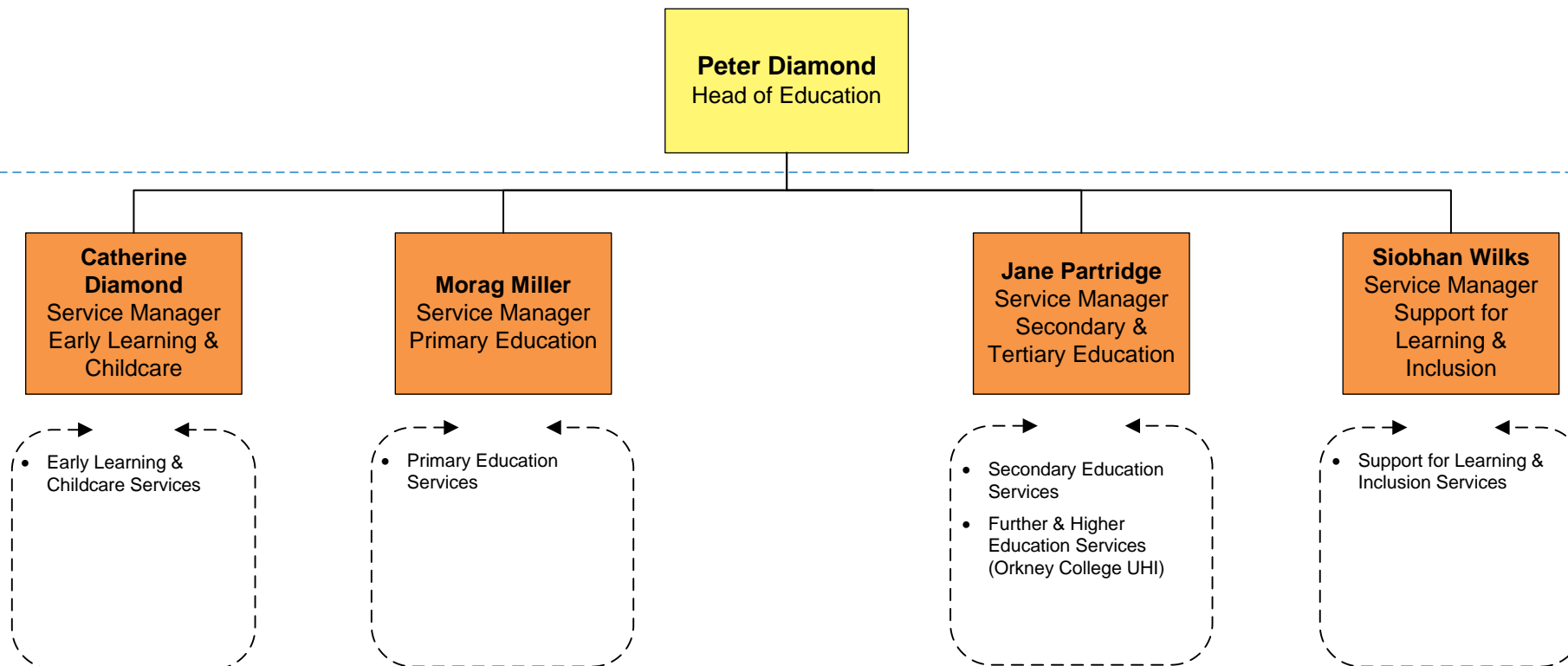
- Housing Strategy & Asset Management
- Strategic Housing Investment Plan
- Tenant Participation
- Homelessness & Allocations
- Housing Management
- Housing Quality
- HRA Business Plan
- School Care Accommodation
- Schools & Cafe Catering
- Sports & Leisure
- Libraries
- Museums
- Culture
- Community Learning & Development
- Employability

Education, Leisure & Housing – Education Remits

Heads of Service

Service Managers

Remits



Education, Leisure & Housing – Community Learning, Leisure & Housing Remits

Heads of Service

Service Managers

Remits

Frances Troup
Head of Community
Learning, Leisure &
Housing

Kerry Spence
Service Manager
Community
Learning,
Development &
Employability

Vacant
Service Manager
Resources

Lesley Mulrairie
Service Manager
Housing,
Homelessness &
Schoolcare
Accommodation

Scott Pring
Service Manager
Corporate Catering

Garry Burton
Service Manager
Leisure & Culture

- Community Learning
- Community Development
- Employability Services
- Youth Services
- Adult Learning

- Business Support
- Directorate Information Management
- Housing Strategy & Policy
- Strategic Housing Investment Plan & House Build
- Local Housing Strategy
- School Transport
- School Facilities
- Strategy & Policy

- Landlord Services
- Private Sector Landlord Registration
- Housing Management
- Homes Improvement Strategy
- Housing Options & Advice
- Homelessness
- Housing Support
- Tenant Participation
- Sheltered Housing
- School Care Accommodation

- School Meals Service
- Catering Services Professional Lead
- Auditing OIC Catering Facilities
- St Magnus Café
- Community Centres Catering
- Management of Franchise Catering
- Papdale Halls of Residence Catering

- Sports & Leisure
- Pickaquoy Centre Trust
- Campsites & Hostels
- Libraries & Archives
- Arts & Museums
- St Magnus Cathedral
- Community Centres

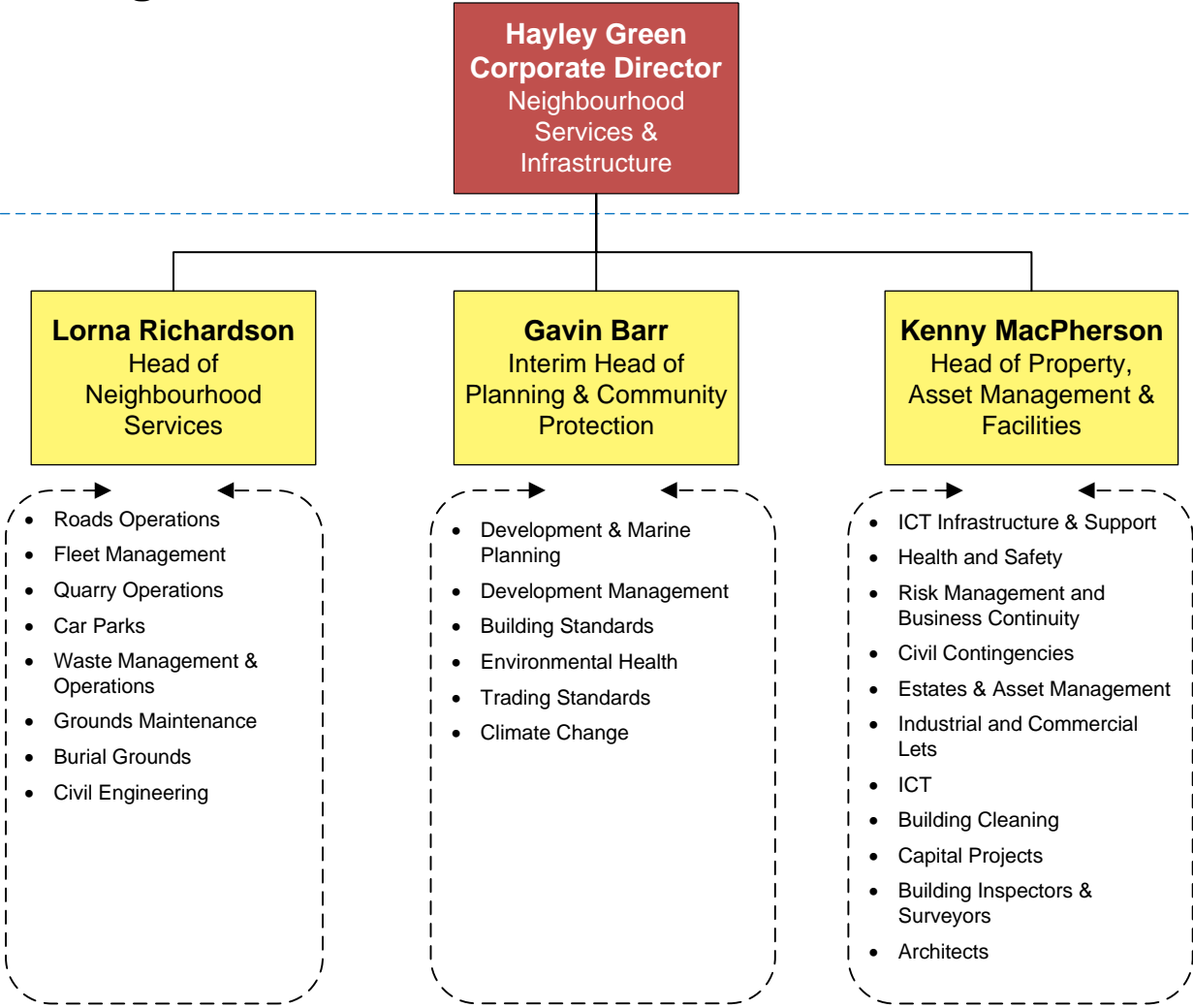
Neighbourhood Services & Infrastructure Remits



Corporate Director

Heads of Service

Remits

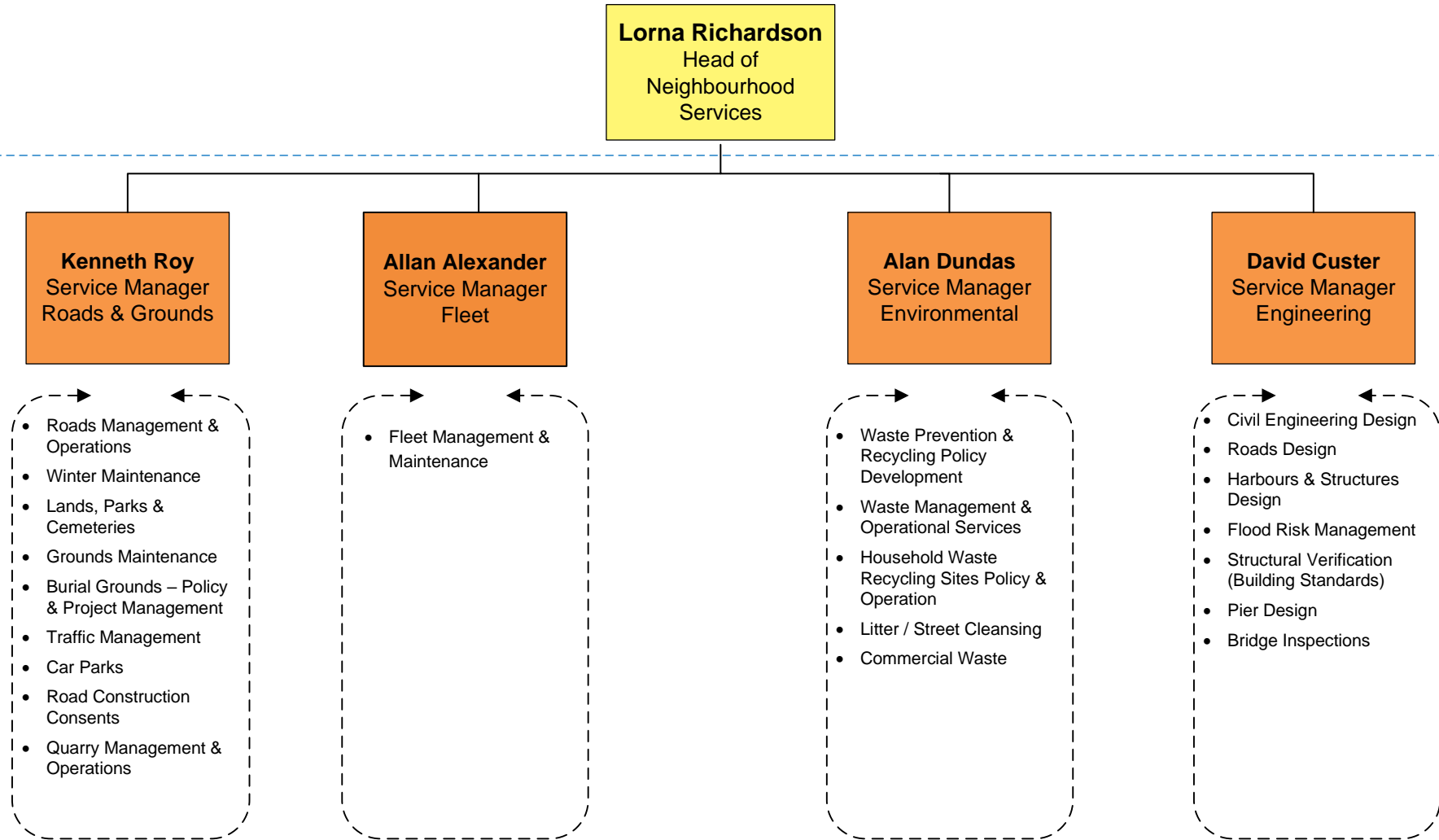


Neighbourhood Services & Infrastructure – Neighbourhood Services Remits

Heads of Service

Service Managers

Remits



Neighbourhood Services & Infrastructure – Planning & Community Protection Remits

Heads of Service

Service Managers

Remits

Gavin Barr
Interim Head of
Planning &
Community
Protection

Steven Poke
Service Manager
Building Standards

- Building Warrant & Completion Certificates
- Building Regulations Compliance
- Dangerous & Defective Buildings

Susan Shearer
Service Manager
Development &
Marine Planning

- Local Development Plan
- Marine Planning
- Other Strategic Development Plans
- Historic Environment
- Outdoor Access
- Natural Environment
- Climate Change
- Archaeology

Jamie Macvie
Service Manager
Development
Management

- Planning Applications
- Planning Control
- Other Planning related applications / controls
- Planning Appeals
- Property & Street Naming

Nick Long
Service Manager
Environmental
Health

- Environmental Protection
- Food Safety
- Private Sector Housing
- Port Health
- Public Health
- Licensing
- Workplace Health & Safety
- Private Water Supplies

Gary Foubister
Service Manager
Trading Standards

- Metrology Chief Inspector of Weights & Measures
- Business / Consumer Advice
- Fair Trading
- Product Safety
- Illicit Crime
- Animal Health & Welfare / Dog Control
- Animal Feed & Primary Production Control

Neighbourhood Services & Infrastructure – Property, Asset Management & Facilities Remits

Heads of Service

Service Managers

Remits

Kenny MacPherson
Head of Property, Asset
Management & Facilities

Caroline Petrie
Service Manager
Building Cleaning

- Cleaning Service to Council-owned Premises
- Mobile Toilet Cleaning Service for Public Toilets

Glen Thomson
Service Manager
Property & Capital
Projects

- Capital Programme
- Architects
- Building Inspectors & Surveyors
- Housing Maintenance & Repairs
- Technical Advice
- Housing Investment, Build, Supply & Delivery

Graeme Christie
Service Manager
Estates & Property
Asset Management

- Estates
- Asset Management
- Corporate Asset Management Plan
- Property & Land Acquisition & Disposal
- Community Asset Transfer

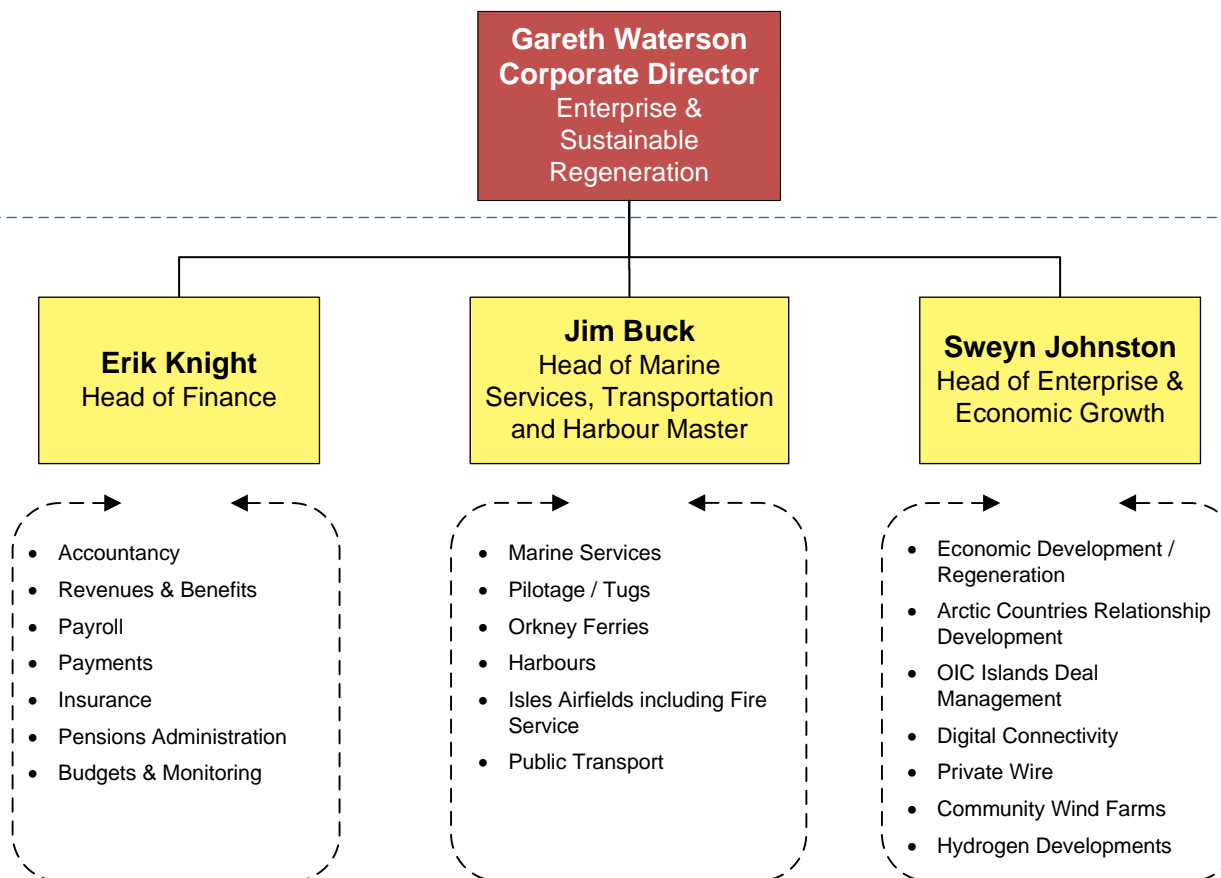
Thomas Aldred
Service Manager
ICT

- ICT Strategy
- ICT Development & Support
- ICT Infrastructure
- Cyber Security

Donna-Claire Hunter
Service Manager
Safety &
Resilience

- Health and Safety
- Civil Contingencies
- Emergency Planning
- Risk Management
- Business Continuity
- Emergency Planning Advisor to the Chief Executive
- Community Safety
- Public Space CCTV

Enterprise & Sustainable Regeneration Remits

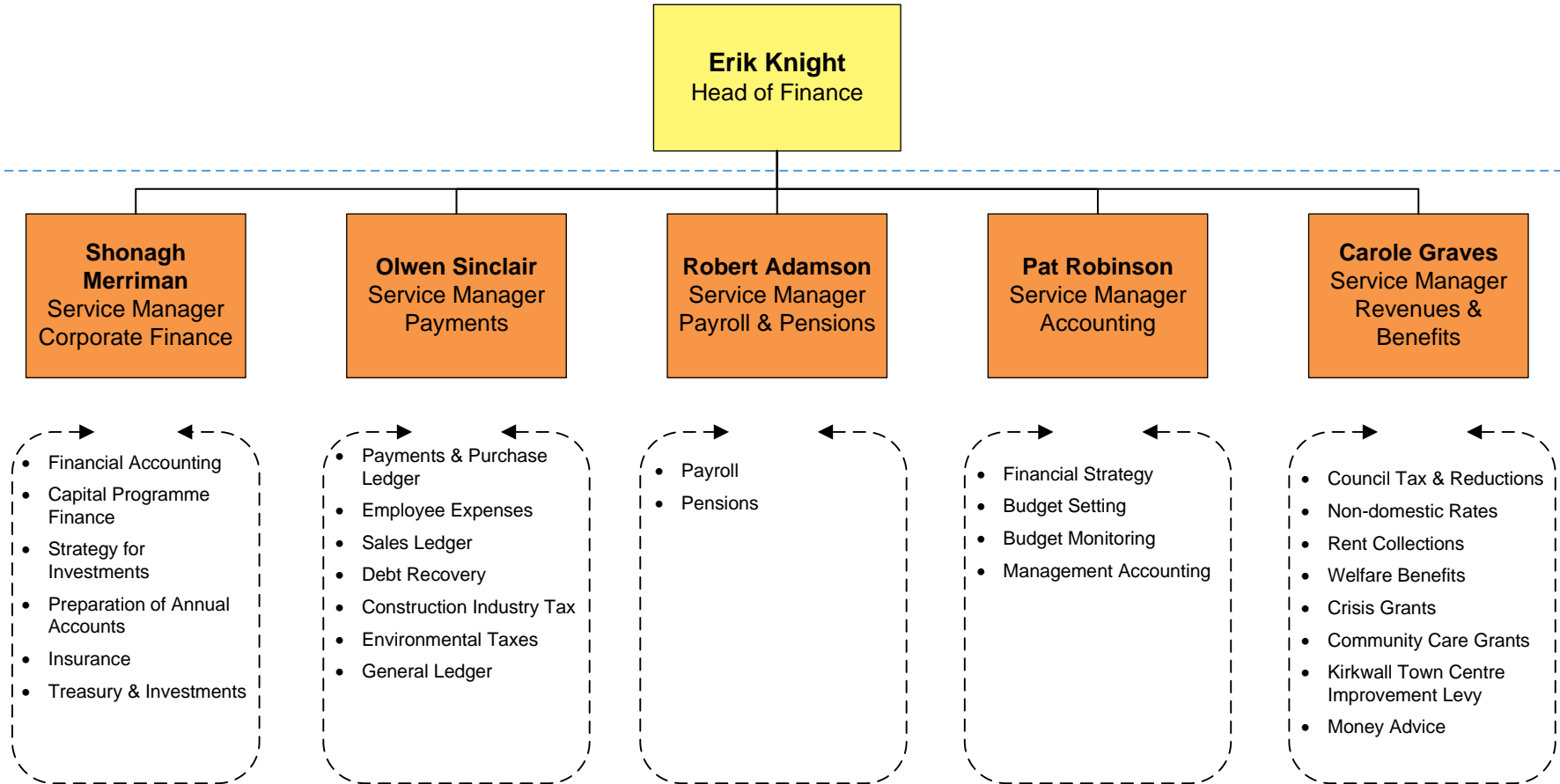


Enterprise & Sustainable Regeneration – Finance Remits

Heads of Service

Service Managers

Remits



Enterprise & Sustainable Regeneration – Marine Services & Transportation Remits



Heads of Service

Service Managers

Remits

Jim Buck
Head of Marine
Services,
Transportation and
Harbour Master

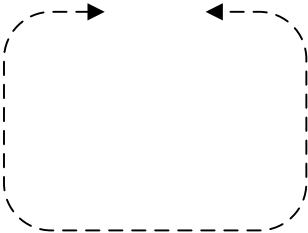
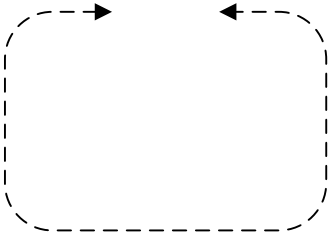
Paul Olvhoj
Business Development
Manager

Vacant
Programme Manager
(Ferry Replacement)

**Mohammadreza
Allahyar**
Marine Infrastructure
Manager

Eddie Barclay
Service Manager
Ferry Operations

Laura Cromarty
Service Manager
Transportation



- Management and Maintenance of Vessels, Equipment & Shore Infrastructure
- Safety of Vessels, Equipment & Shore Infrastructure

- Orkney Ferries

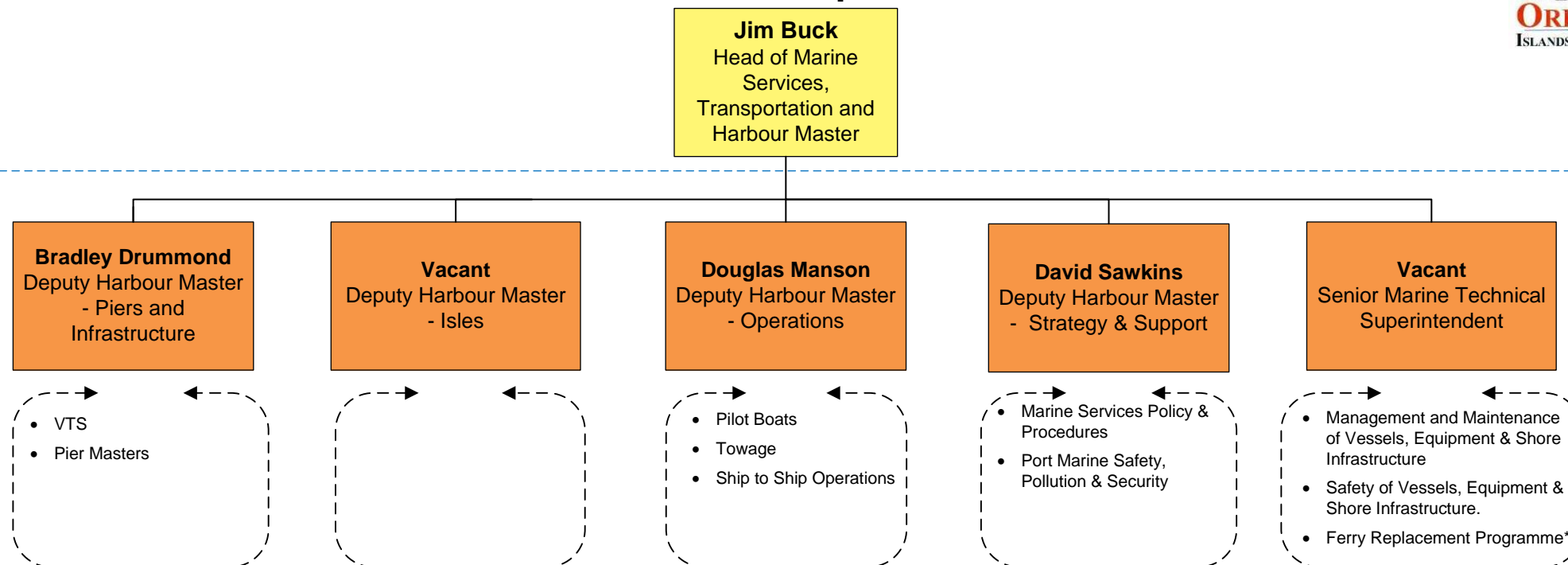
- Transportation Service Delivery
- Transportation Strategy
- Isles Airfields

Enterprise & Sustainable Regeneration – Marine Services & Transportation Remits

Heads of Service

Service Managers

Remits

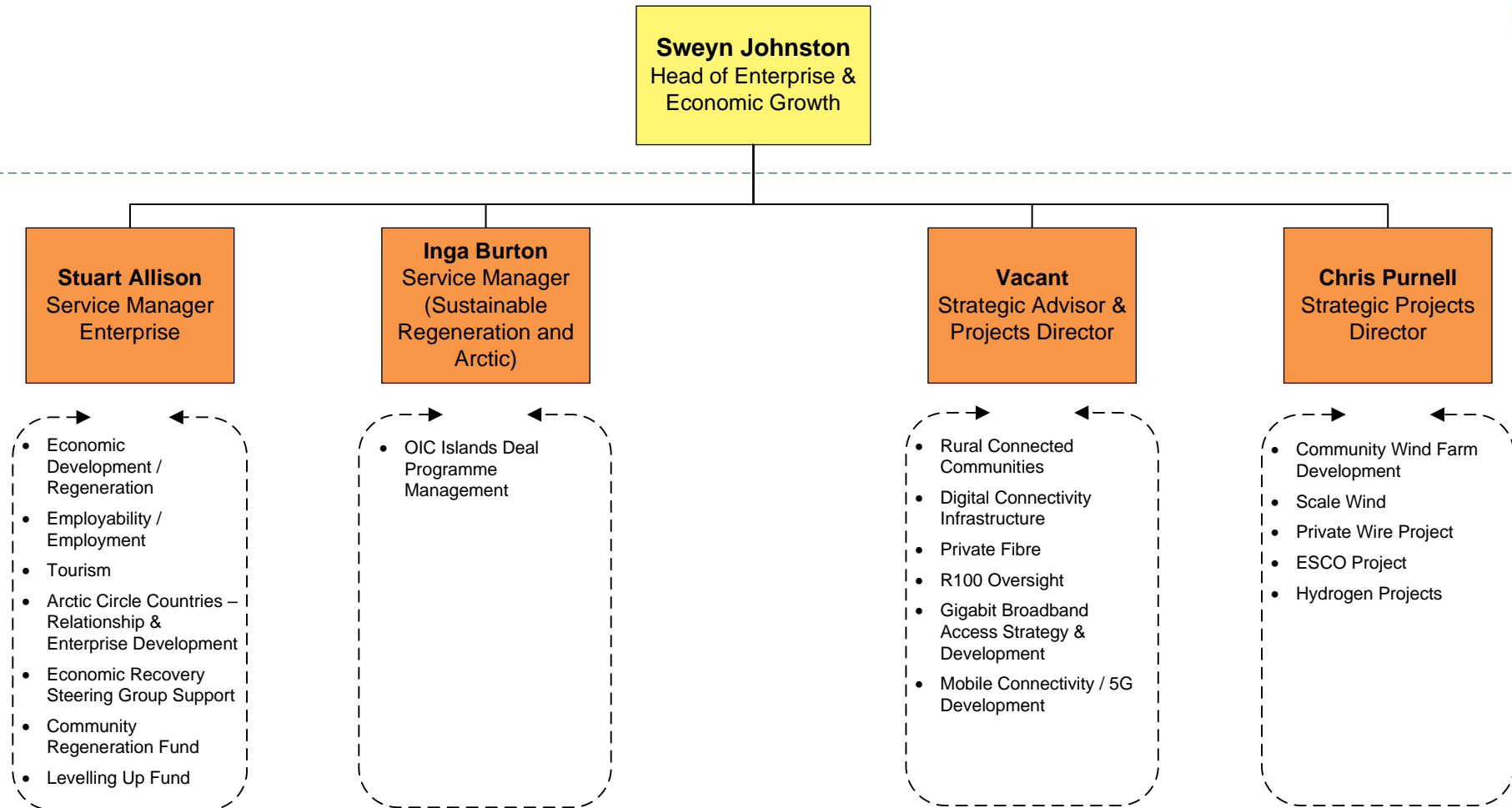


Enterprise & Sustainable Regeneration – Enterprise & Economic Growth Remits

Heads of Service

Service Managers

Remits



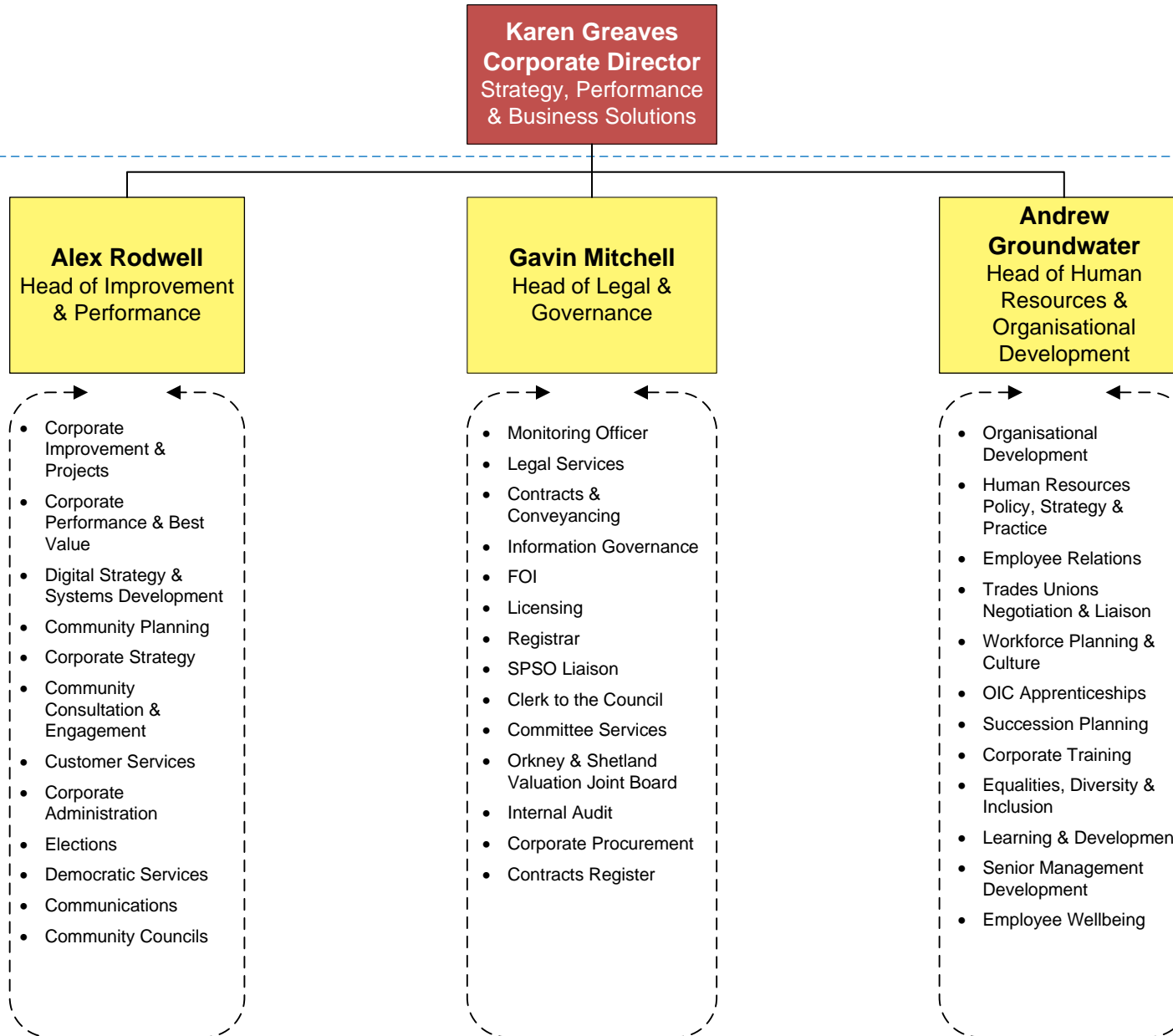
Strategy, Performance & Business Solutions

Remits

Corporate Director

Heads of Service

Remits

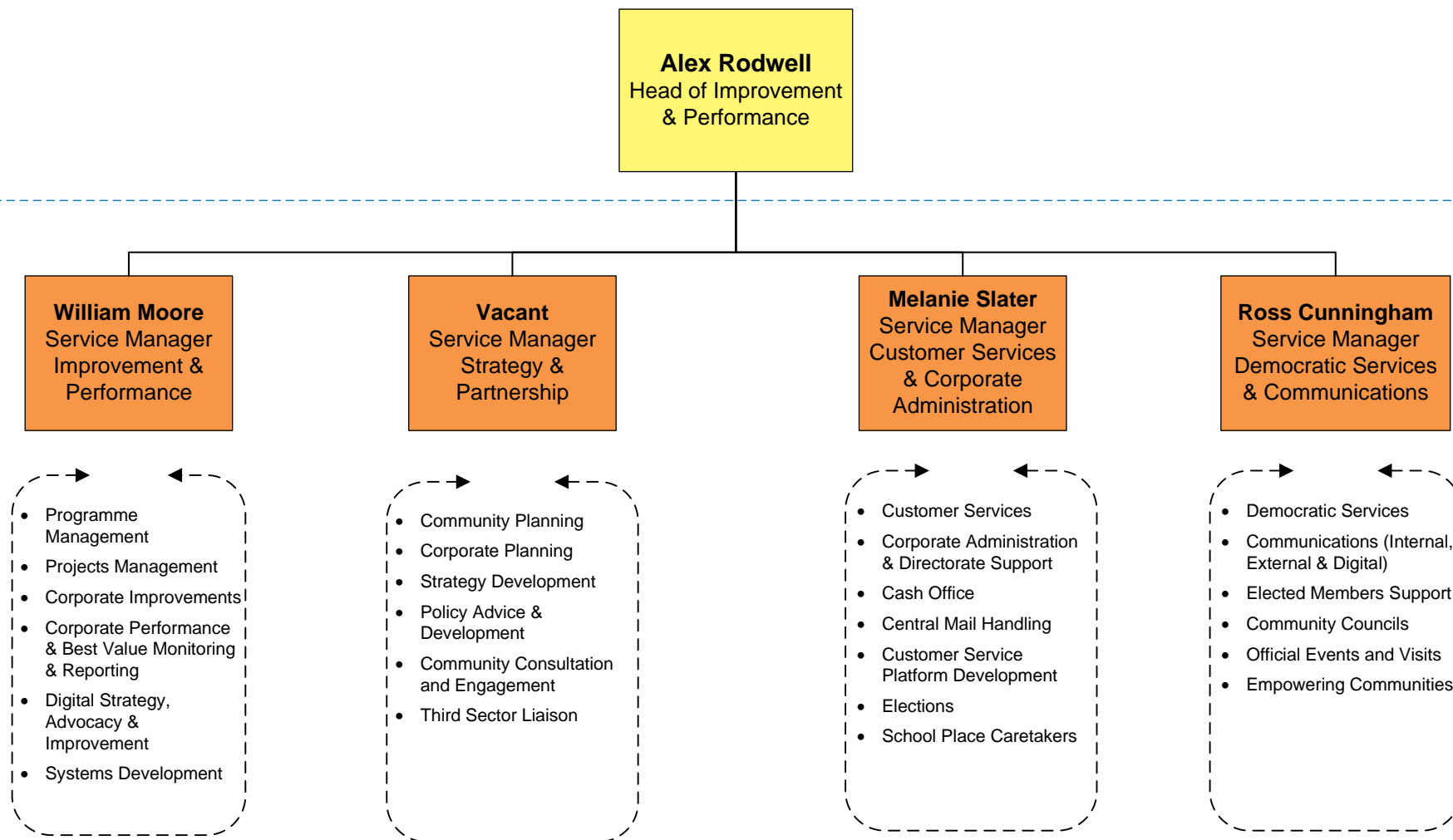


Strategy, Performance & Business Solutions – Improvement & Performance Remits

Heads of Service

Service Managers

Remits



Strategy, Performance & Business Solutions – Legal & Governance Remits

Heads of Service

Service Managers

Remits

Gavin Mitchell
Head of Legal & Governance

Karen Bevilacqua
Service Manager
Legal Services

Hazel Flett
Service Manager
Governance

Andrew Paterson
Chief Internal
Auditor

Rosemary Colsell
Service Manager
Procurement

- Legal Services
- Litigation
- Courts
- Contracts & Conveyancing
- Licensing
- Employment Law
- Legal Advice to Directorates

- Committee Services / Clerking
- Information Governance
- FOI / Complaints
- SPSO Liaison
- Councillors Code / Standards Commission
- RIPSA
- Registrars
- Orkney & Shetland VJB
- Islands Deal Joint Committee
- Constitutional Reform

- Internal Audit
- Risk / Fraud Management
- Best Value

- Corporate Procurement
- Circular Economy
- Community Wealth Building
- Contracts Register
- Sustainable Procurement
- Contract Standing Orders

Strategy, Performance & Business Solutions – Human Resources & Organisational Development Remits

Heads of Service

Service Managers

Remits

