



Exterior of the Italian Chapel



Interior

THE ITALIAN CHAPEL, Lambholm

This beautiful chapel was built in the 1940s by Italian prisoners of war. A Nissen hut was transformed using scrap iron, plasterboard, cement, tin and paint. The Madonna and Child was painted by Domenico Chiochetti who copied it from a picture on a card which he kept throughout the war. Open: daily, dawn till dusk.



Looking across Eynhallow sound towards the island of Rousay

ROUSAY HERITAGE CENTRE

Attached to the rear of the Harbours Dept's waiting room and toilets at the pier head. Rousay Heritage Centre tells the story of Rousay in text and graphics, and makes an ideal starting point for exploring the island. If found locked, key can be obtained from the post office/shop.



1. St Magnus Cathedral
2. The Orkney Museum
3. Corrigall Farm Museum
4. Kirbuster Museum
5. Orkneyinga Saga Centre
6. Italian Chapel
7. Scapa Flow Visitor Centre
8. Rousay Heritage Centre



'Burrian Eagle' Pictish symbol stone
On display in The Orkney Museum



ORKNEY MUSEUMS AND HERITAGE



Saint Magnus Cathedral



Gateway into The Orkney Museum

Visit our website: www.orkney.gov.uk

Printed at The Orcadian Limited, www.orcadian.co.uk

Free admission to all museums and heritage sites run by Orkney Islands Council.

ST MAGNUS CATHEDRAL, Broad Street, Kirkwall. Built from red and yellow sandstone this 'fine minster' was dedicated to Magnus Erlendsson, Earl of Orkney. He shared the earldom with his cousin, Haakon Paulsson, but jealousy and greed culminated in Magnus being martyred on the island of Egilsay. The cathedral is a fine example of a Romano-gothic cathedral.



Stained glass window showing Saint Magnus

Tours of the upper levels are available. Please book with the custodian. Open April-Sept Mon-Sat 9-6 Sun 1-6. Oct-Mar Mon-Fri 9-1, 2-5.



The reliquary which held the bones of Saint Magnus is on display in The Orkney Museum.

For information ring: 01856 874894



THE ORKNEY MUSEUM, Tankerness House, Broad Street, Kirkwall. The North and South wings of Tankerness House were originally manses for the cathedral clergy. After the reformation they were bought by Gilbert Foulzie, the first Protestant minister, who in 1574 built the arched gateway that bears his coat of arms. For three centuries it was the home of the Baikie family of Tankerness, whose estate gave the house its name. It opened as a museum in 1968, and is an 'A' listed building. The Orkney Museum tells the story of Orkney, from the Stone Age, through the Picts and Vikings to the present day. There is a large collection of old photographs, and activities to amuse younger visitors. The collection is of international importance, and it has a changing temporary exhibition programme. The Baikie Library and Drawing Room gives the visitor an idea of how the house was when it was a family home. Open May-Sept Mon-Sat 10.30-5. Oct-Apr 10.30-12.30, 1.30-5

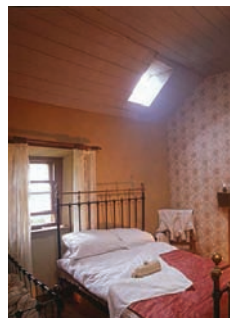
**For information ring: 01856 873535
fax: 01856 871560**



FARM & FOLK LIFE



The central hearth



The Edwardian bedroom



The parlour

KIRBUSTER MUSEUM, Birsay. See how our ancestors lived, and enjoy Orkney's last peat-fired central hearth and Victorian garden at Kirbuster, once the home of the Spence and Hay families. Enjoy a game of putting on the green and explore the new Trowie Trail in the back garden. Open Mar-Oct Mon-Sat 10.30-1, 2-5 Sun 2-7.

For information ring/fax: 01856 771268



The 'inbye' at Corrigan.

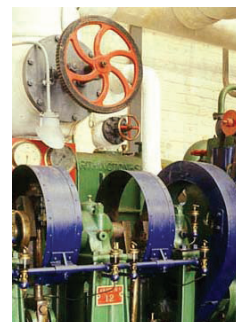


The kiln.

CORRIGALL FARM MUSEUM, Harray. A traditional 'but and ben' house. The working barn and grain kiln, horse-drawn machinery and livestock make for an interesting visit for children and adults. Open Mar-Oct Mon-Sat 10.30-1, 2-5 Sun 2-7.

For information ring/fax: 01856 771411

NAVAL HISTORY



The pumproom

SCAPA FLOW VISITOR CENTRE & MUSEUM,

Lyness, Hoy. Displays tell the story of the naval anchorage in two World Wars. Find out about the *Royal Oak* disaster and view our files of war-time photographs. See the audio visual display about the history of Scapa Flow, try the children's activities and visit the gift shop and café. No need to take the car, the centre is a two minute walk from the pier. If you do wish to take your car please book on to the boat. Tel: 811397. Open all year Mon-Fri 9-4.30 (mid May-Sept open Sat, Sun subject to ferry timetable). **For information ring: 01856 791300**



The forecourt at Scapa Flow Visitor Centre & Museum

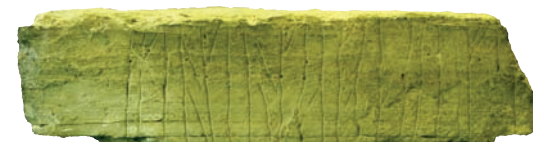


Gun seen through anti-submarine fencing.

VIKINGS

THE ORKNEYINGA SAGA CENTRE, Orphir, tells the story of the Norse Earls of Orkney using The Orkneying Saga and an audiovisual display. The Round Church and the ruins of Norse buildings, believed to be the Earls Bu, are close by. Open: daily, dawn till dusk.

The Round Church.



Rune stone found at the Round Church. It reads 'no church is as good as. . . ' and is on display at The Orkney Museum